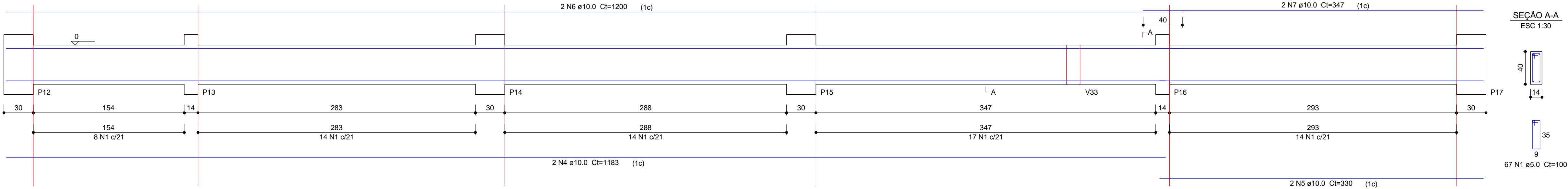
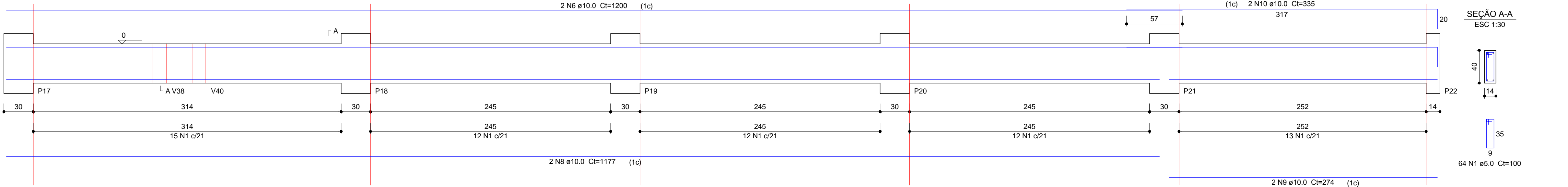


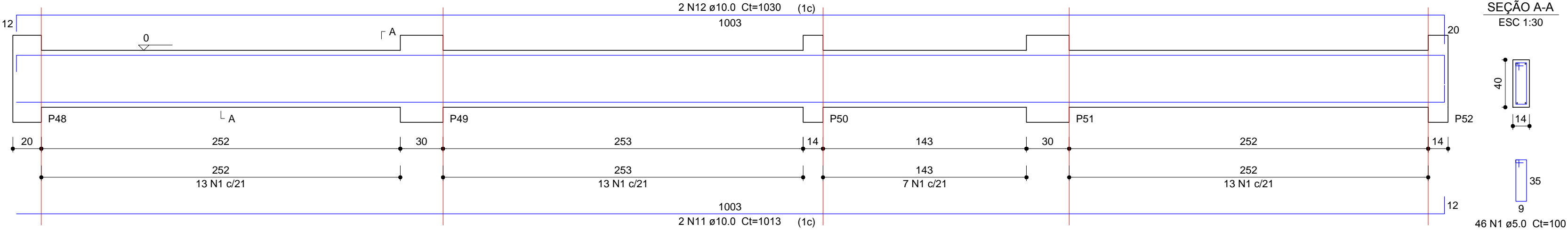
V10 (14 x 40)
ESC 1:25



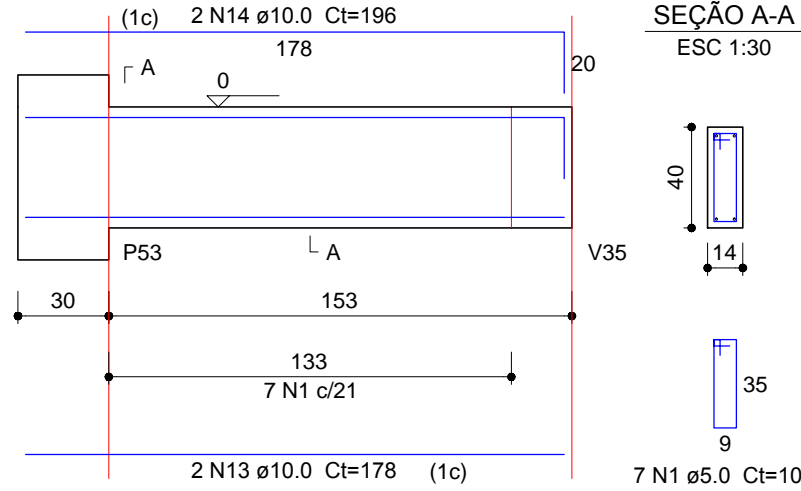
V11 (14 x 40)
ESC 1:25



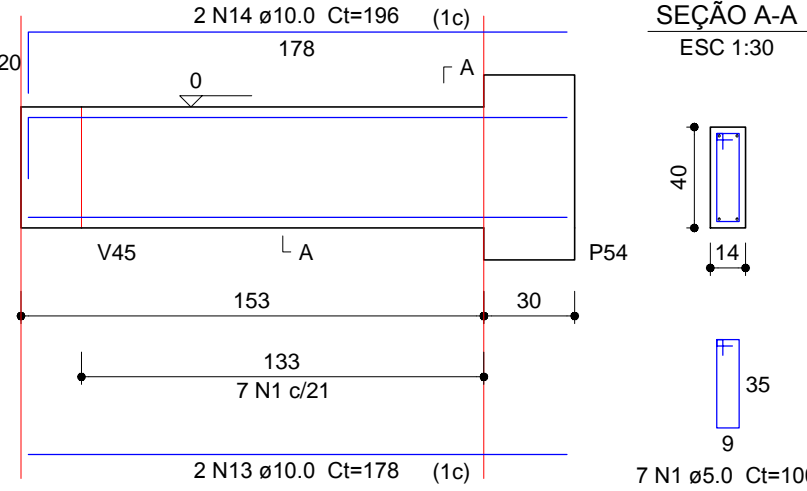
V19 (14 x 40)
ESC 1:25



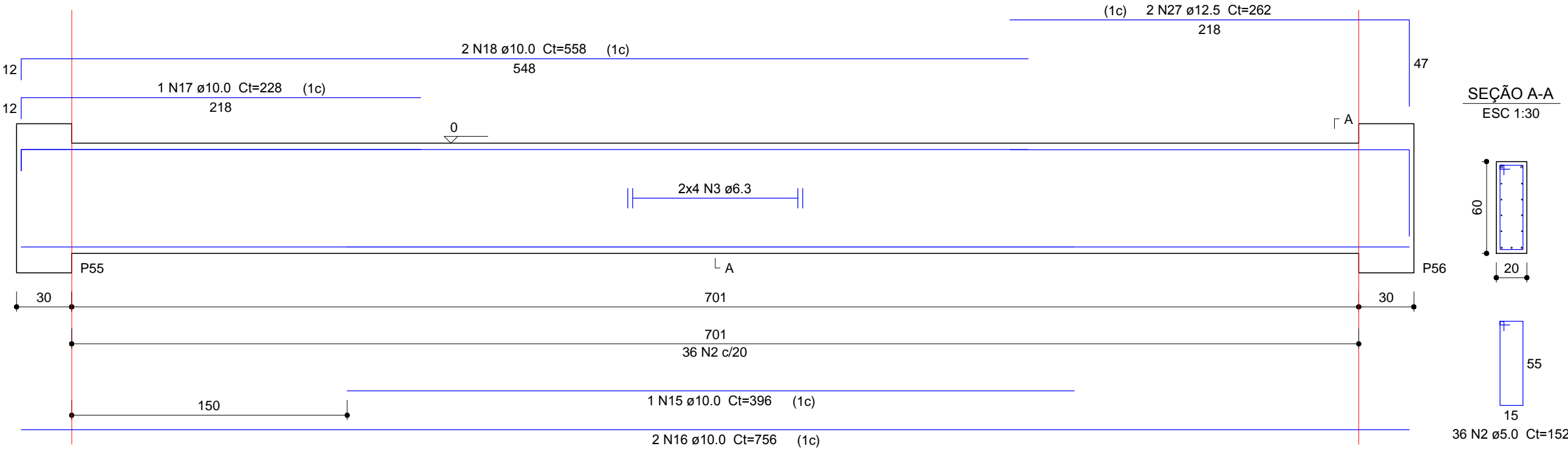
V20 (14 x 40)
ESC 1:25



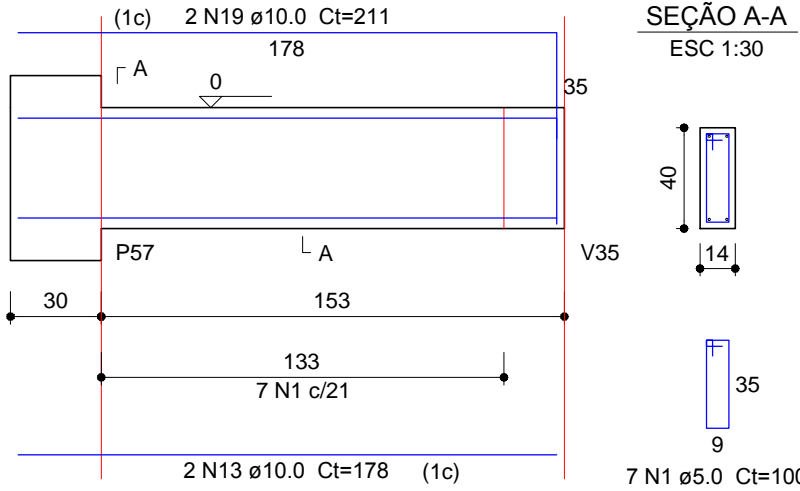
V21 (14 x 40)
ESC 1:25



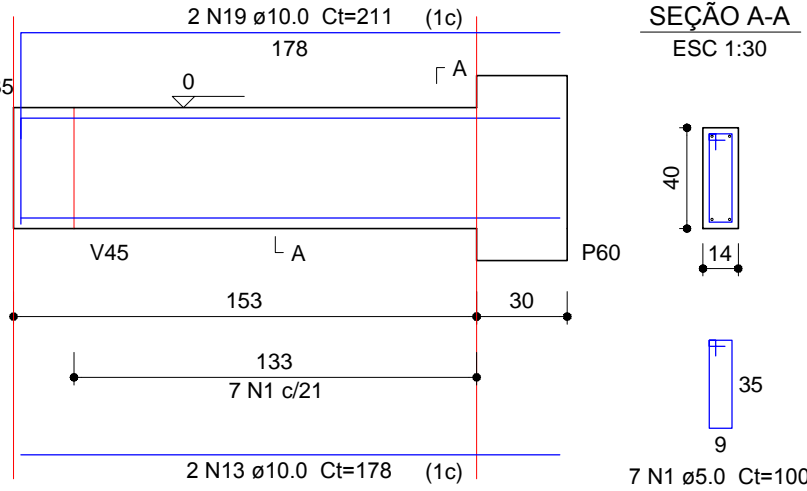
V22 (20 x 60)
ESC 1:25



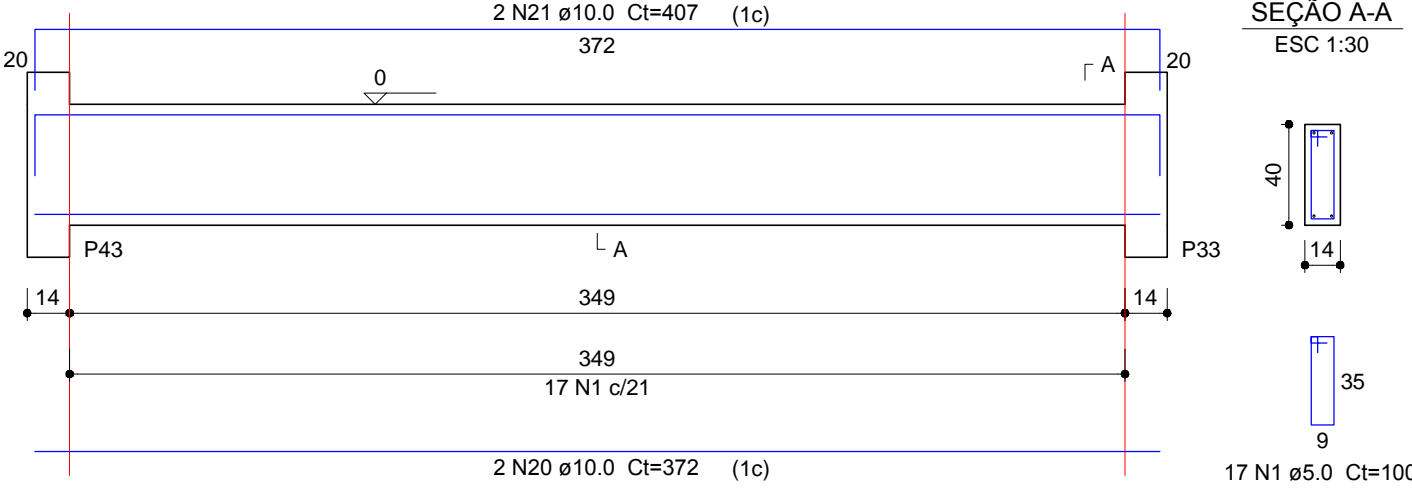
V23 (14 x 40)
ESC 1:25



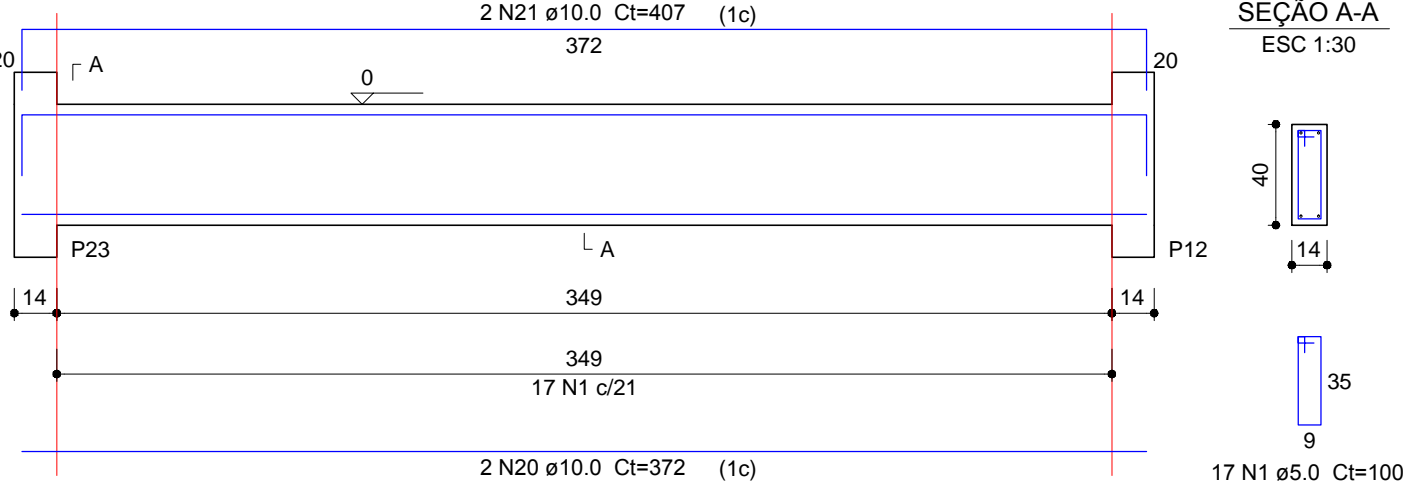
V24 (14 x 40)
ESC 1:25



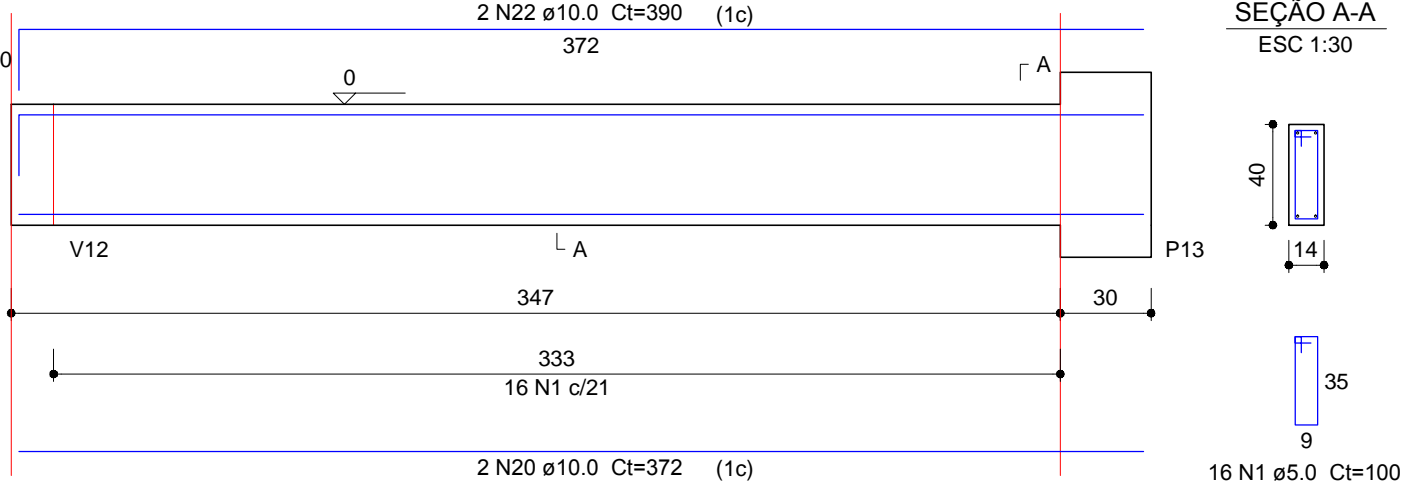
V25 (14 x 40)
ESC 1:25



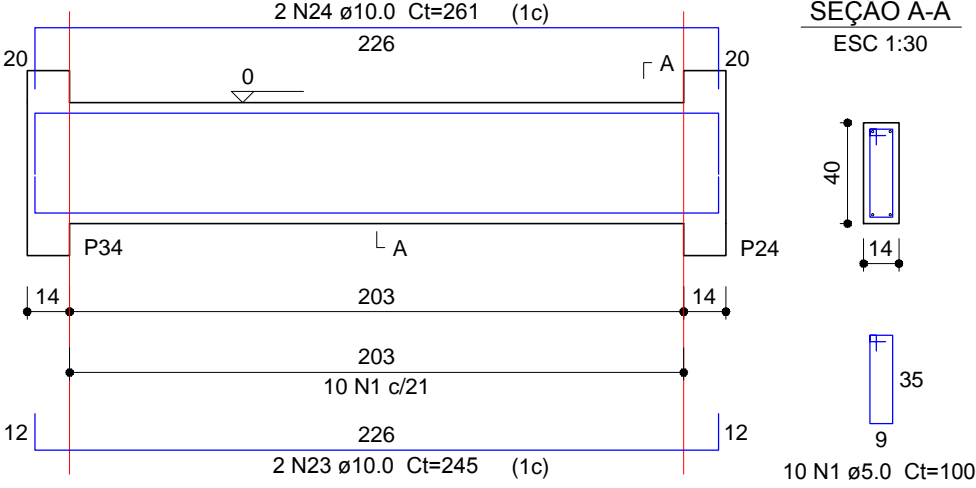
V26 (14 x 40)
ESC 1:25



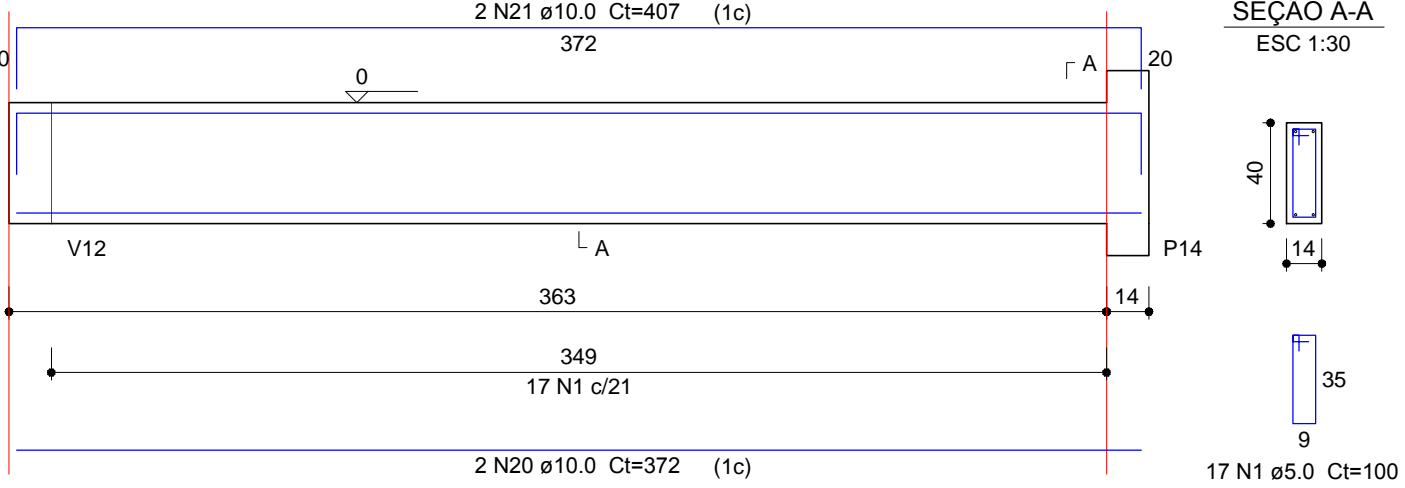
V27 (14 x 40)
ESC 1:25



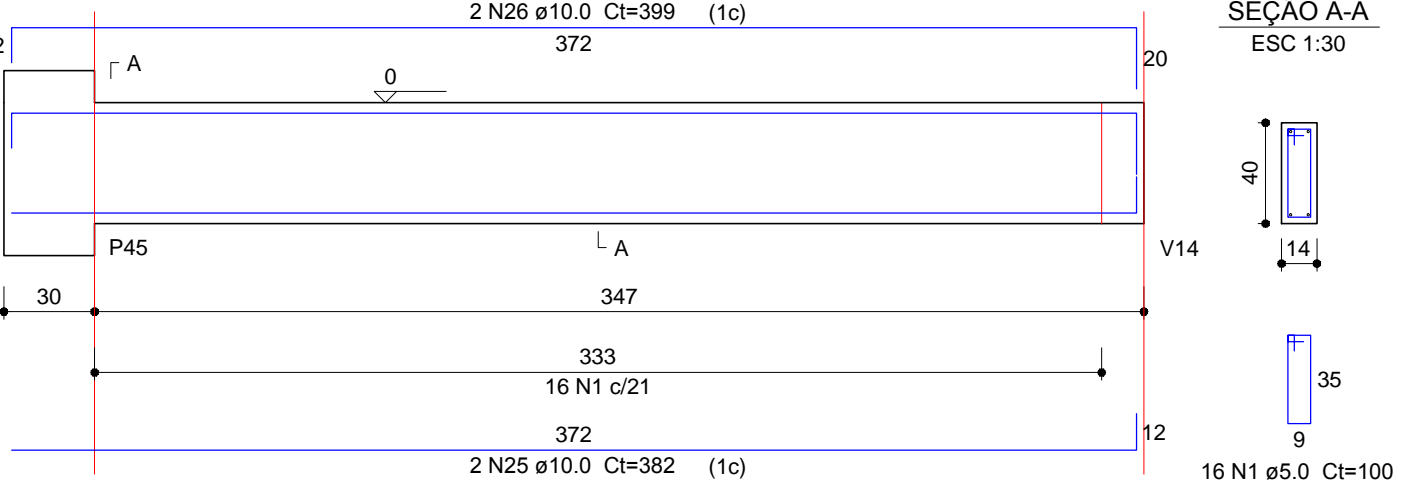
V28 (14 x 40)
ESC 1:25



V29 (14 x 40)
ESC 1:25



V30 (14 x 40)
ESC 1:25



Relação do aço					
AÇO	N	DIAM (mm)	QUANT	C.UNIT (cm)	C.TOTAL (cm)
V10	1	5.0	298	100	29800
V20	2	5.0	36	152	5472
V23	3	6.3	8	CORR	6048
V26	4	10.0	2	1183	2366
V29	5	10.0	2	330	660
	6	10.0	4	1200	4800
	7	10.0	2	347	694
	8	10.0	2	1177	2354
	9	10.0	2	274	548
	10	10.0	2	335	670
	11	10.0	2	1013	2026
	12	10.0	2	1030	2060
	13	10.0	8	178	1424
	14	10.0	4	196	784
	15	10.0	1	396	396
	16	10.0	2	756	1512
	17	10.0	1	228	228
	18	10.0	2	558	1116
	19	10.0	4	211	844
	20	10.0	8	372	2976
	21	10.0	6	407	2442
	22	10.0	2	390	780
	23	10.0	2	245	490
	24	10.0	2	261	522
	25	10.0	2	382	764
	26	10.0	2	399	798
	27	12.5	2	262	524

Resumo do aço			
AÇO	DIAM (mm)	C.TOTAL (m)	PESO + 10 % (kg)
CA50	6.3	60.5	16.3
	10.0	312.6	212
	12.5	5.3	5.6
CA60	5.0	352.8	59.8
PESO TOTAL (kg)			
CA50	233.8		
CA60	59.8		