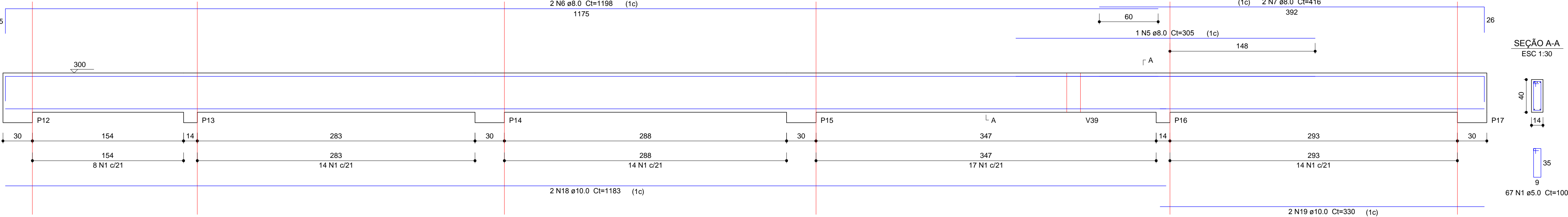


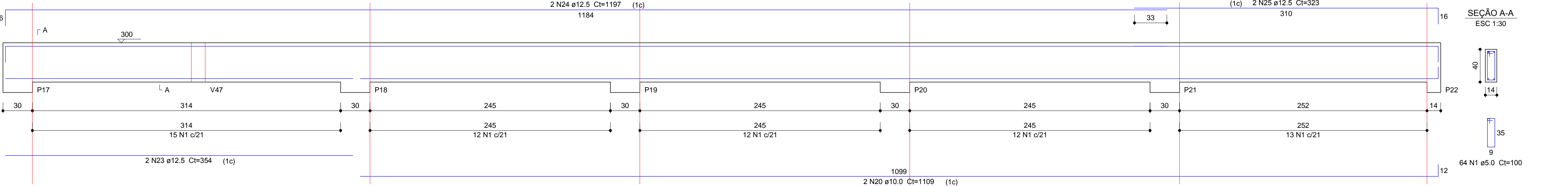
V11 (14 x 40)

ESC 1:25



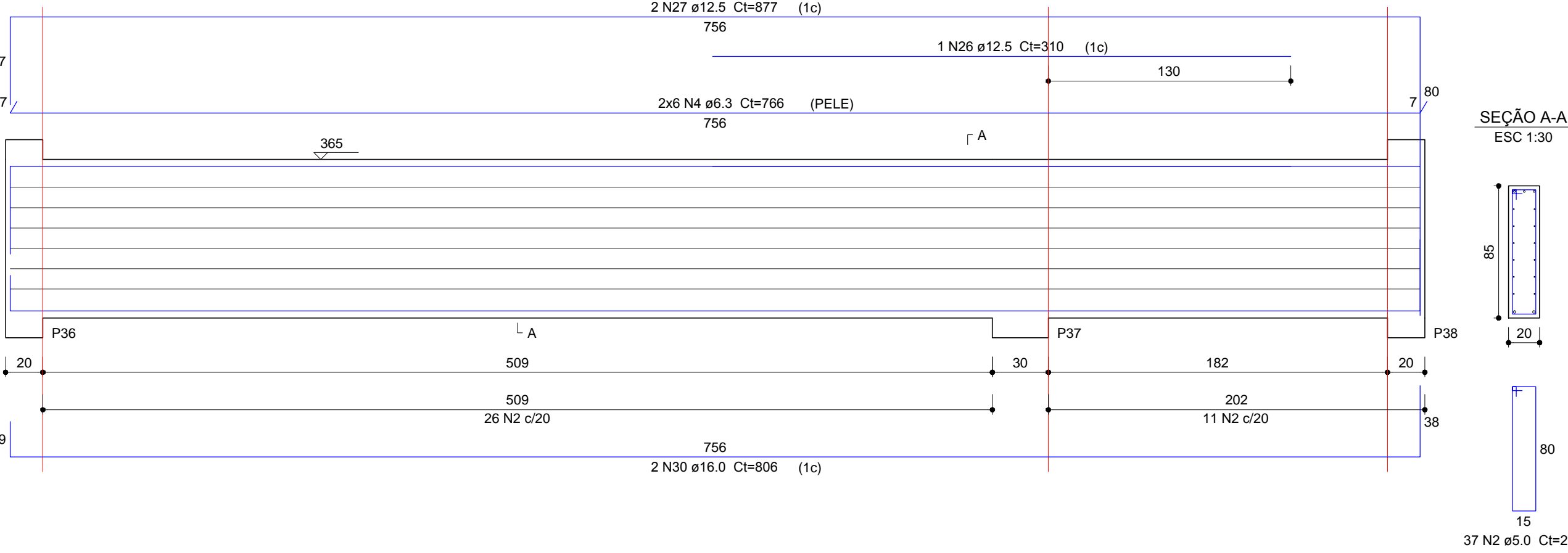
V12 (14 x 40)

ESC 1:25



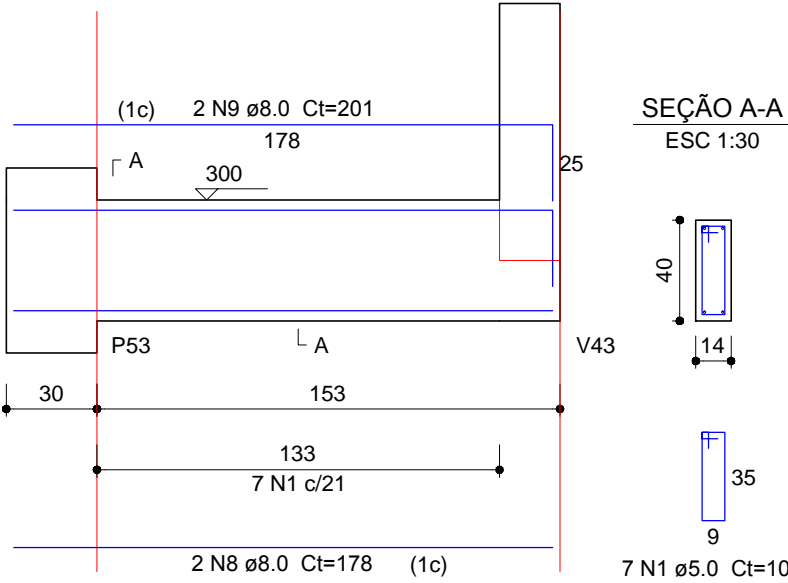
V16 (20 x 85)

ESC 1:25



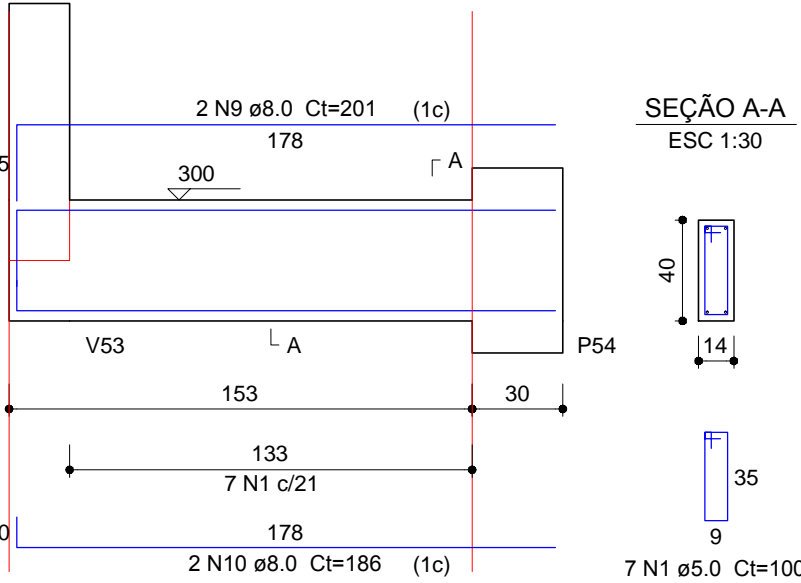
V24 (14 x 40)

ESC 1:25



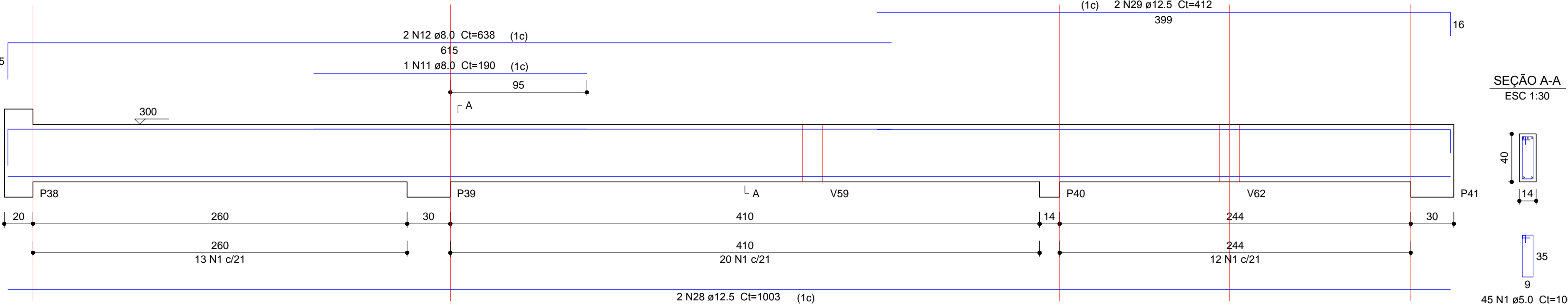
V25 (14 x 40)

ESC 1:25



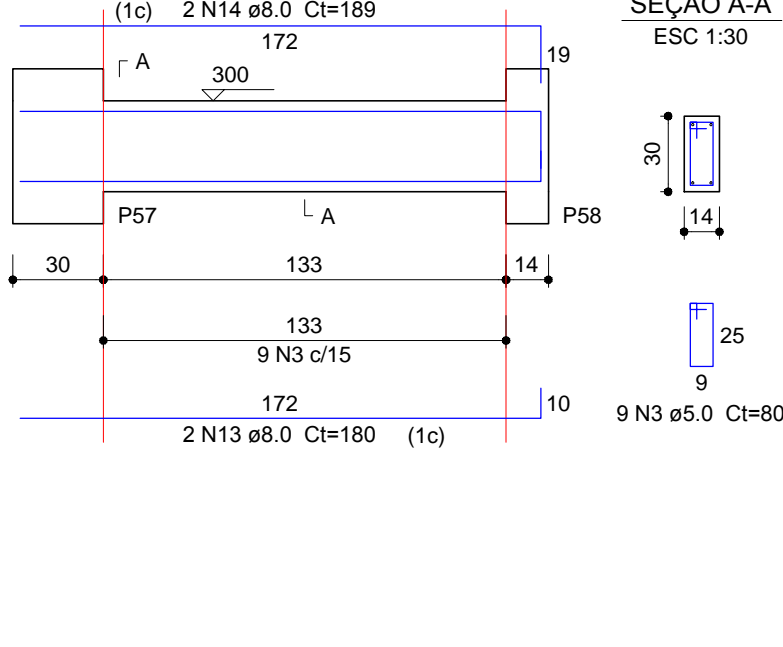
V17 (14 x 40)

ESC 1:25



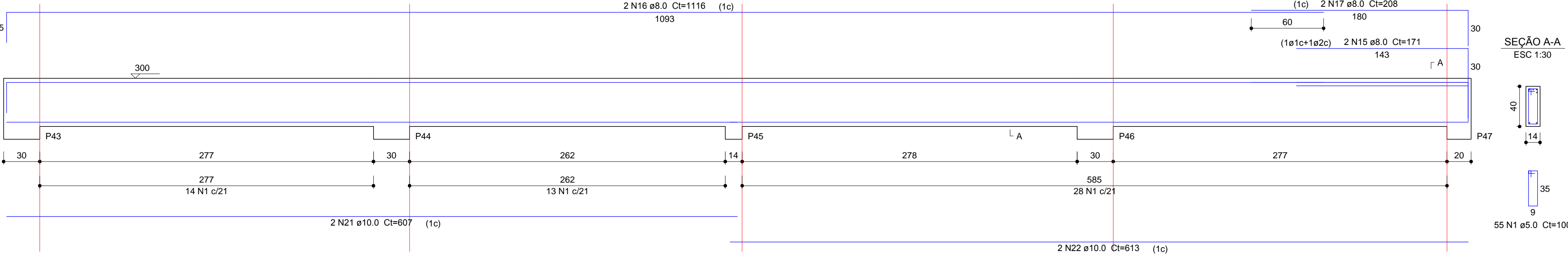
V27 (14 x 30)

ESC 1:25



V18 (14 x 40)

ESC 1:25



Relação do aço

AÇO	N	DIAM (mm)	QUANT	C.UNIT (cm)	C.TOTAL (cm)
V11	1	5.0	245	100	24500
V17	2	5.0	37	202	7474
V25	3	5.0	9	80	720
CA50	4	6.3	12	766	9192
	5	8.0	1	305	305
	6	8.0	2	1198	2396
	7	8.0	2	416	832
	8	8.0	2	178	356
	9	8.0	4	201	804
	10	8.0	2	186	372
	11	8.0	1	190	190
	12	8.0	2	638	1276
	13	8.0	2	180	360
	14	8.0	2	189	378
	15	8.0	2	171	342
	16	8.0	2	1116	2232
	17	8.0	2	208	416
	18	10.0	2	1183	2366
	19	10.0	2	330	660
	20	10.0	2	1109	2218
	21	10.0	2	607	1214
	22	10.0	2	613	1226
	23	12.5	2	354	708
	24	12.5	2	1197	2394
	25	12.5	2	323	646
	26	12.5	1	310	310
	27	12.5	2	877	1754
	28	12.5	2	1003	2006
	29	12.5	2	412	824
	30	16.0	2	806	1612

Resumo do aço

AÇO	DIAM (mm)	C.TOTAL (m)	PESO + 10 % (kg)
CA50	6.3	92	24.7
	8.0	102.6	44.5
	10.0	76.9	52.1
	12.5	86.5	91.6
	16.0	16.2	28
CA60	5.0	327	55.4
PESO TOTAL (kg)			
CA50		240.9	
CA60		55.4	

Volume de concreto (C-25) = 4.49 m³
Área de forma = 68.13 m²