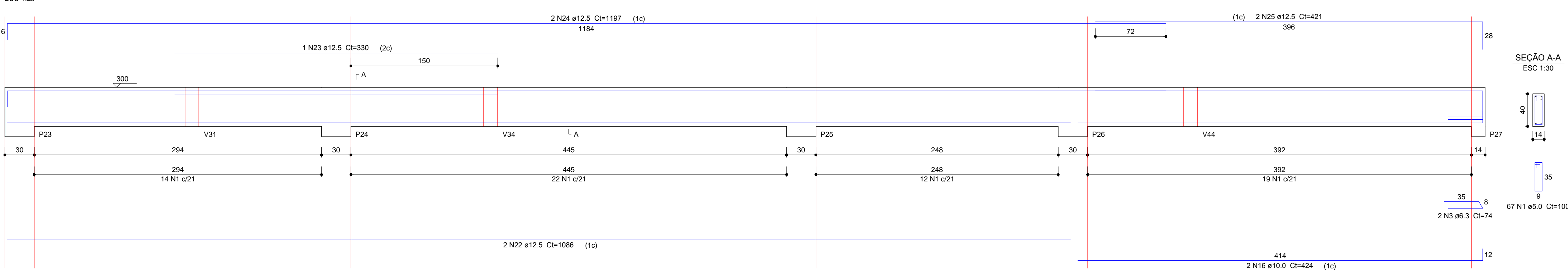
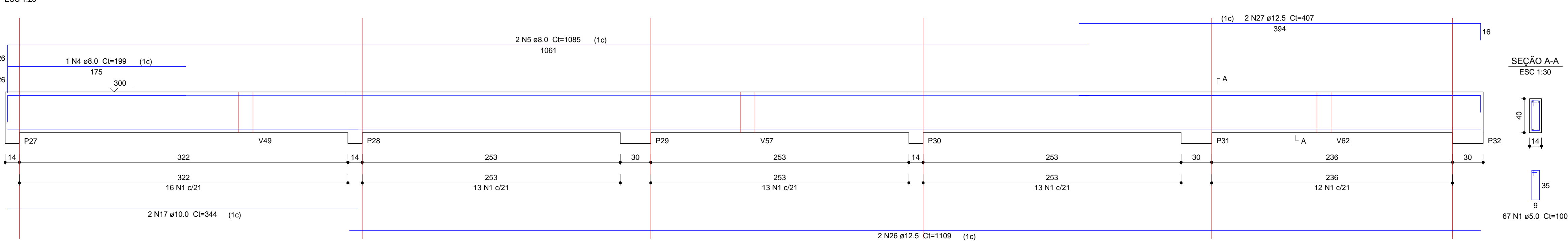


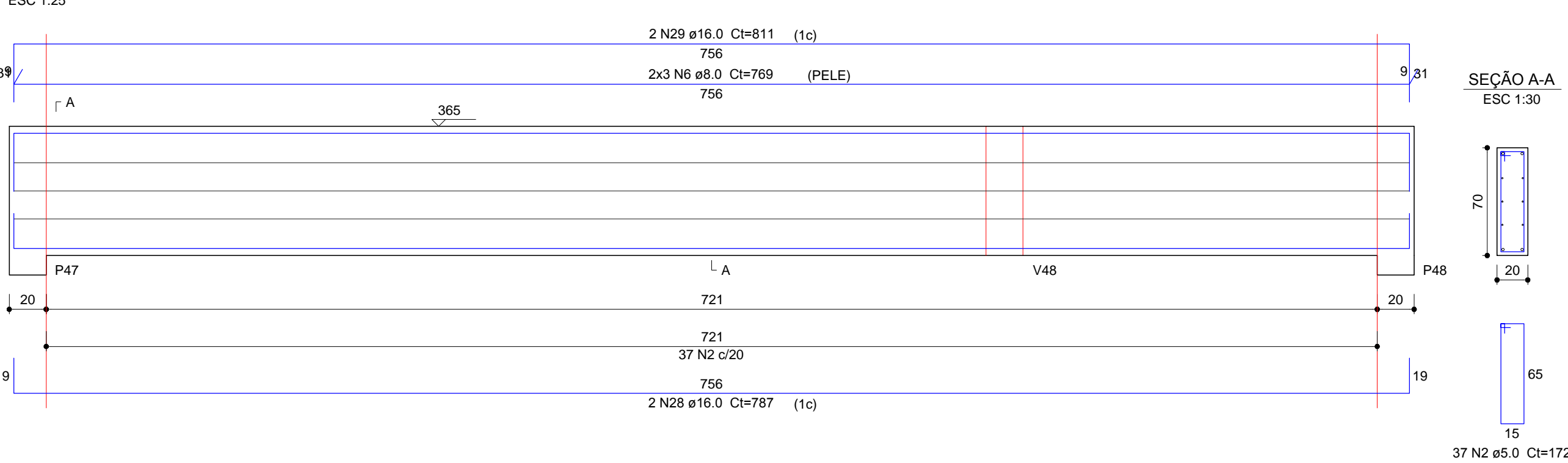
V13 (14 x 40)



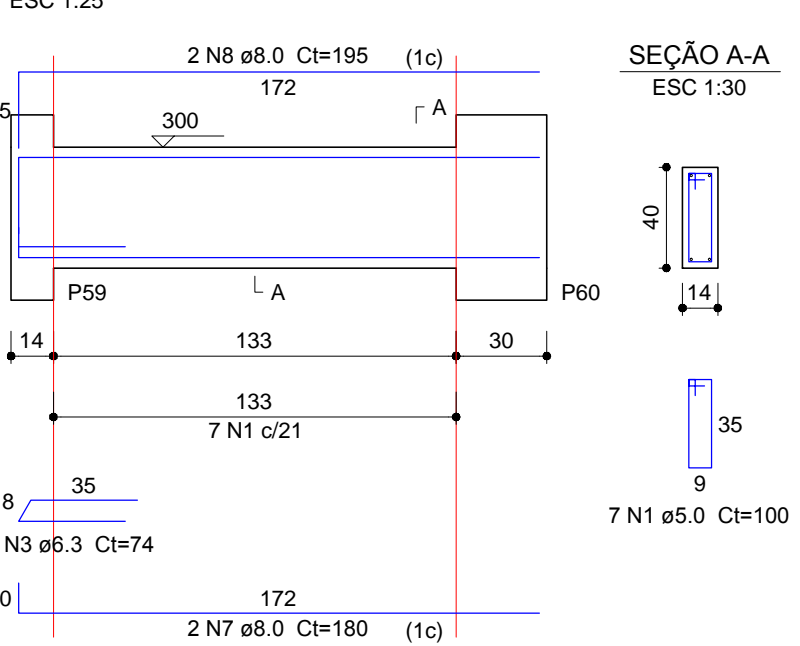
V14 (14 x 40)



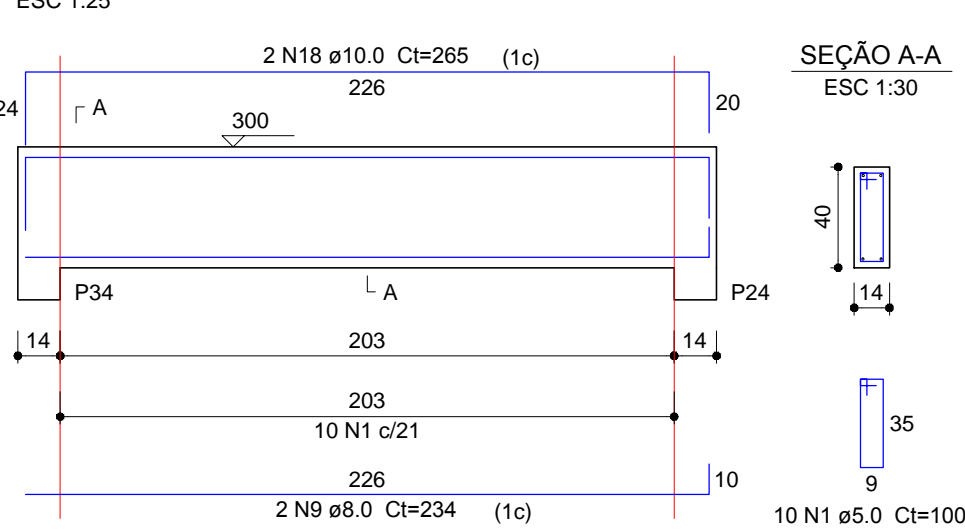
V19 (20 x 70)



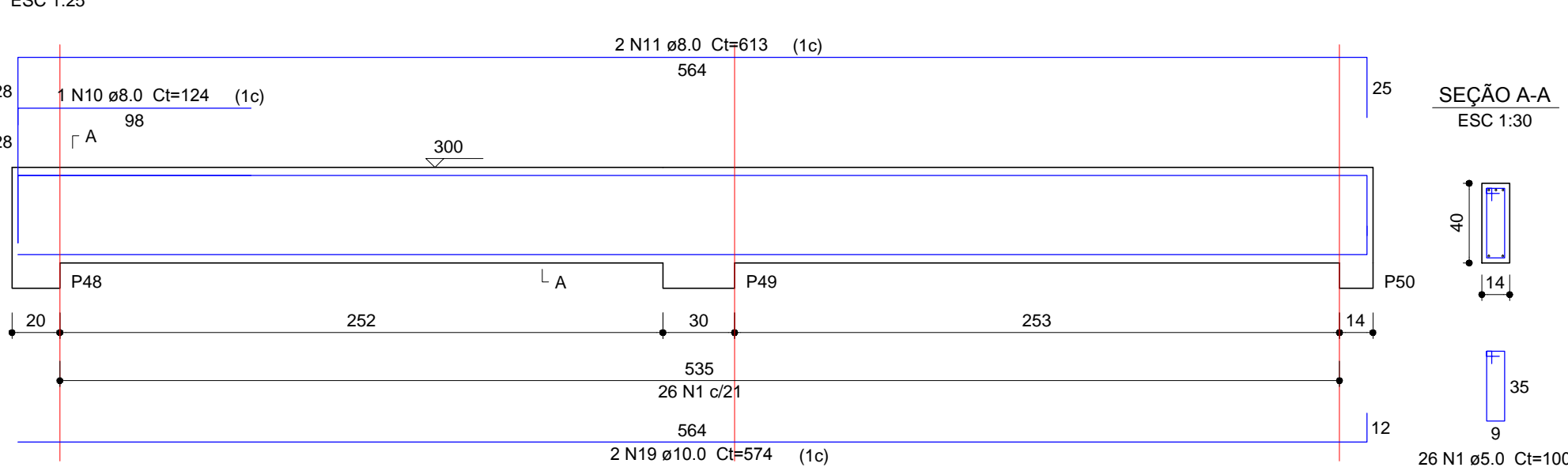
V28 (14 x 40)



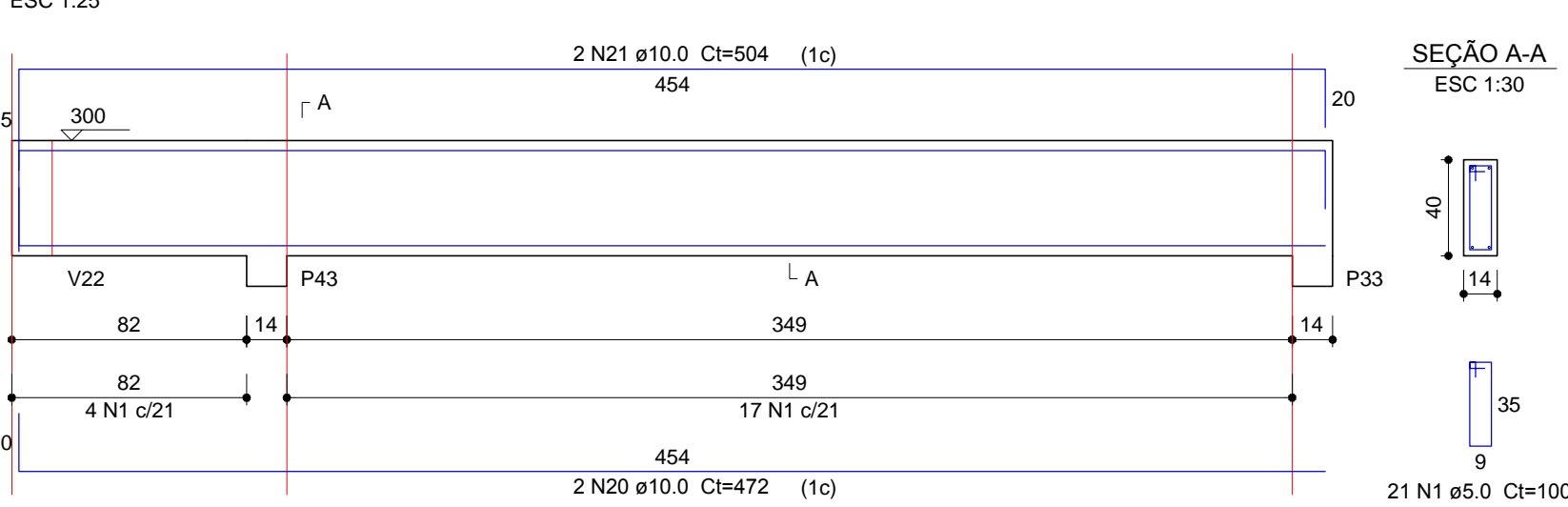
V33 (14 x 40)



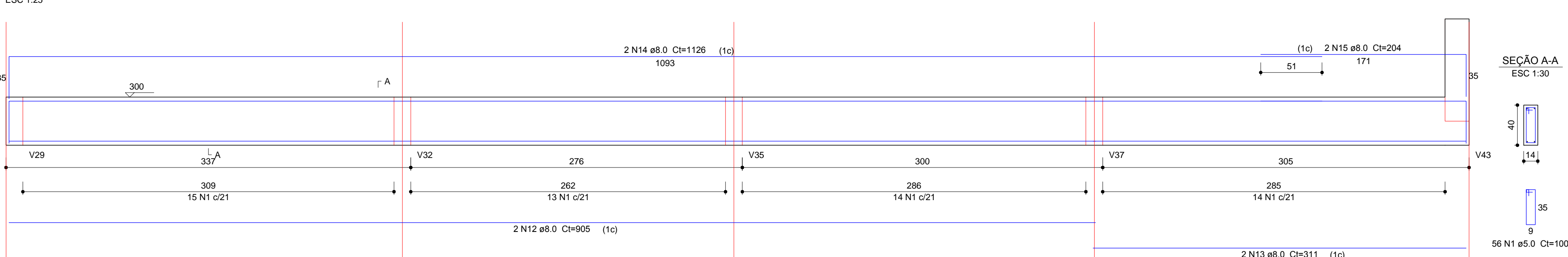
V20 (14 x 40)



V29 (14 x 40)



V22 (14 x 40)



Relação do aço

AÇO	N	DIAM (mm)	QUANT	C.UNIT (cm)	C.TOTAL (cm)
CA60	1	5.0	254	100	25400
	2	5.0	37	172	6364
CA50	3	6.3	3	74	222
	4	8.0	1	199	199
	5	8.0	2	1085	2170
	6	8.0	6	769	4614
	7	8.0	2	180	360
	8	8.0	2	195	390
	9	8.0	2	234	468
	10	8.0	1	124	124
	11	8.0	2	613	1226
	12	8.0	2	905	1810
	13	8.0	2	311	622
	14	8.0	2	1126	2252
	15	8.0	2	204	408
	16	10.0	2	424	848
	17	10.0	2	344	688
	18	10.0	2	265	530
	19	10.0	2	574	1148
	20	10.0	2	472	944
	21	10.0	2	504	1008
	22	12.5	2	1086	2172
	23	12.5	1	330	330
	24	12.5	2	1197	2394
	25	12.5	2	421	842
	26	12.5	2	1109	2218
	27	12.5	2	407	814
	28	16.0	2	787	1574
	29	16.0	2	811	1622

Resumo do aço

AÇO	DIAM (mm)	C.TOTAL (m)	PESO + 10 % (kg)
CA50	6.3	2.3	0.6
	8.0	146.5	63.6
	10.0	51.7	35
	12.5	87.7	92.9
	16.0	32	55.5
CA60	5.0	317.7	53.9

PESO TOTAL (kg)	
CA50	247.6
CA60	53.9

Volume de concreto (C-25) = 4.21 m³
Área de forma = 64.96 m²



PRÓ-REITORIA DE ADMINISTRAÇÃO
COORDENAÇÃO DE ENGENHARIA E ARQUITETURA
Rua Esmeralda, 430 - Faixa Nova - Camobi - CEP 97110-747 - Santa Maria - Rio Grande do Sul.
Telefone: (51) 3226-6630

OBRA: **CENTRO DE SAÚDE**

LOCAL: **IF FARROUPILHA - CAMPUS SANTO ÂNGELO**

PROJETO: **ESTRUTURAL**

ÁREA: **385,57m²**

CONTEÚDO: **ARM. VIGAS COBERTUTA**

ESCALA: **Indicada**

PROPRIETÁRIO: **INSTITUTO FEDERAL FARROUPILHA**

DATA: **Julho/2018**

RESPONSÁVEL:

DESENHO: **Iagor**

ENG. CIVIL LETÍCIA ZORZELA - CREA RS 150530

PRANCHA: **EST 15/23**