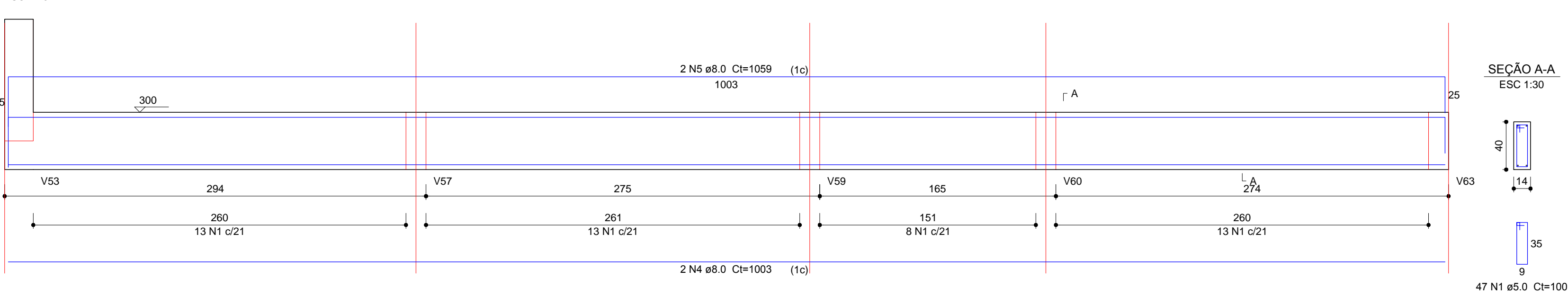
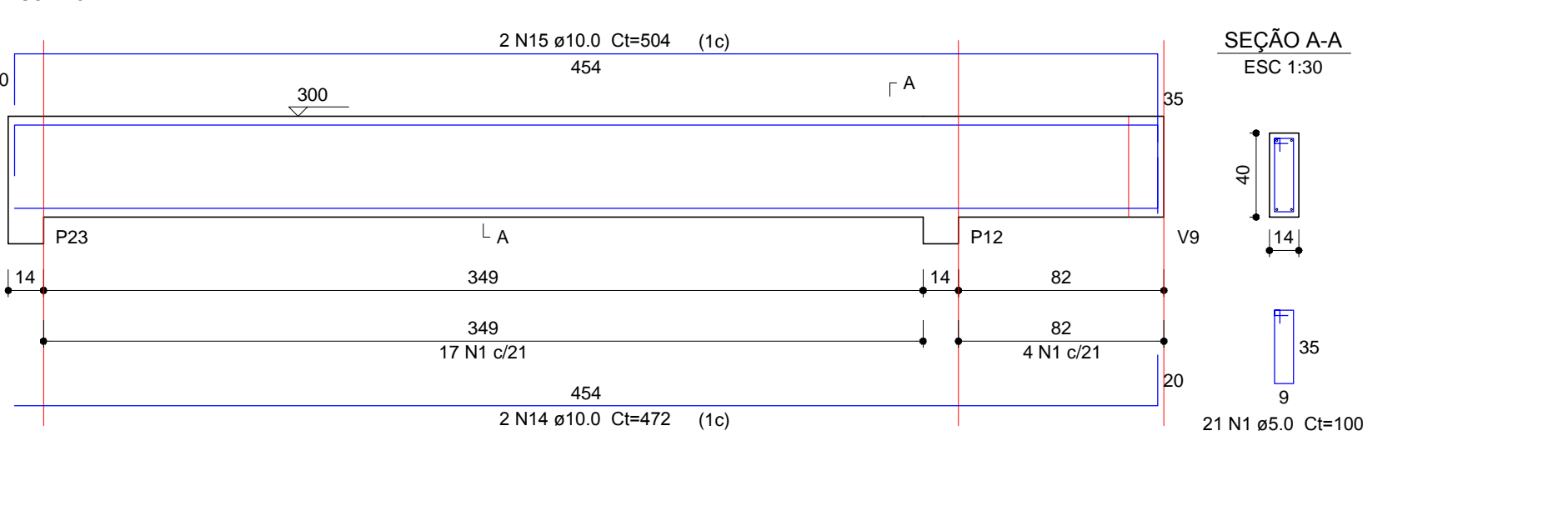


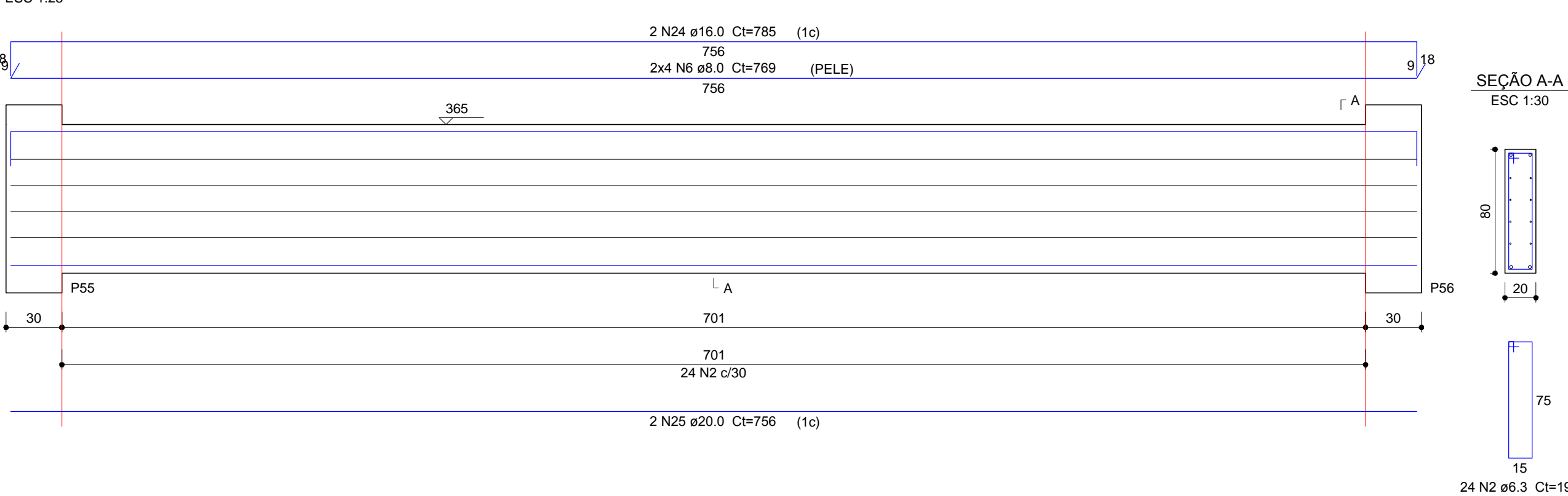
V23 (14 x 40)



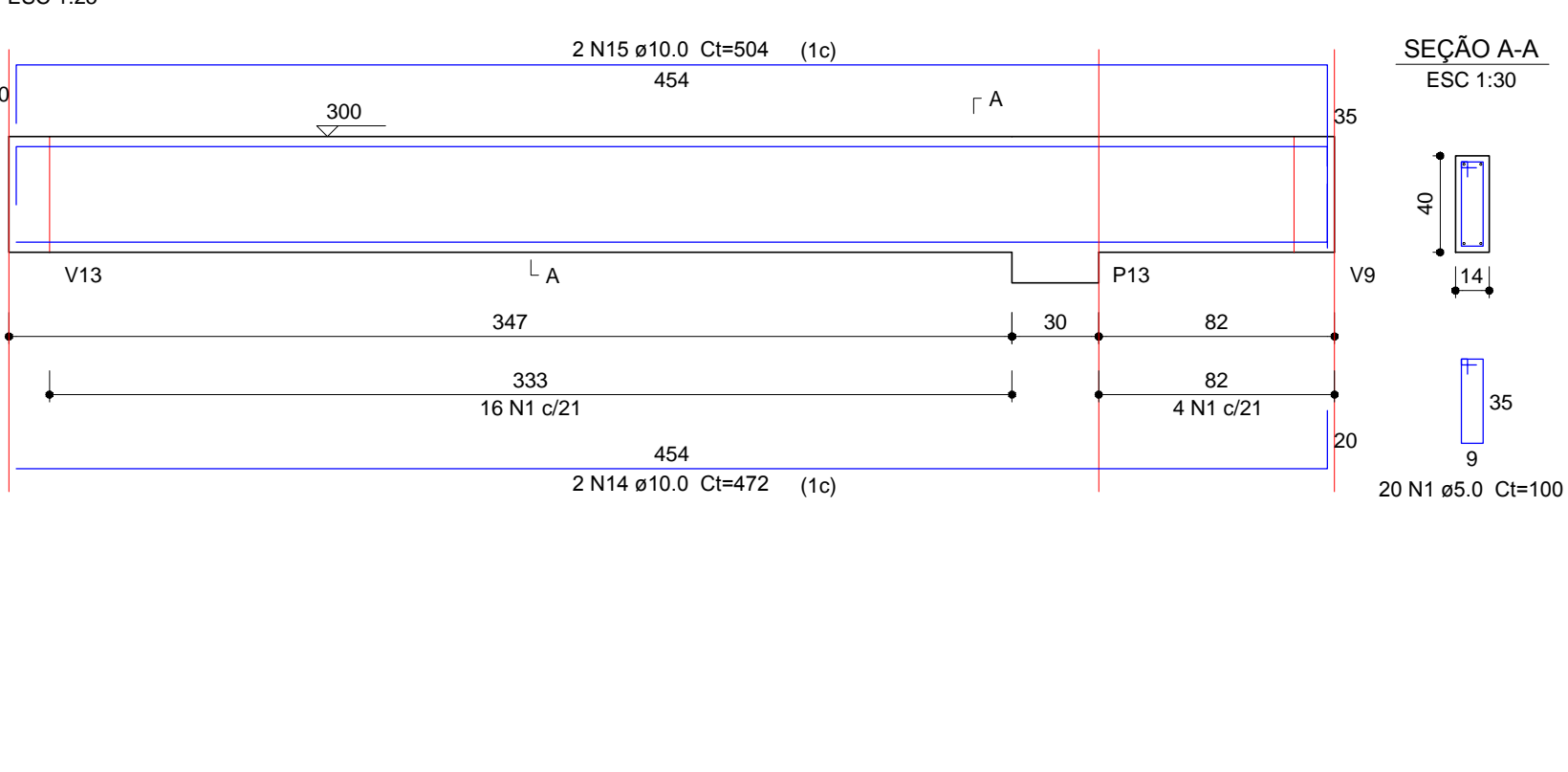
V30 (14 x 40)



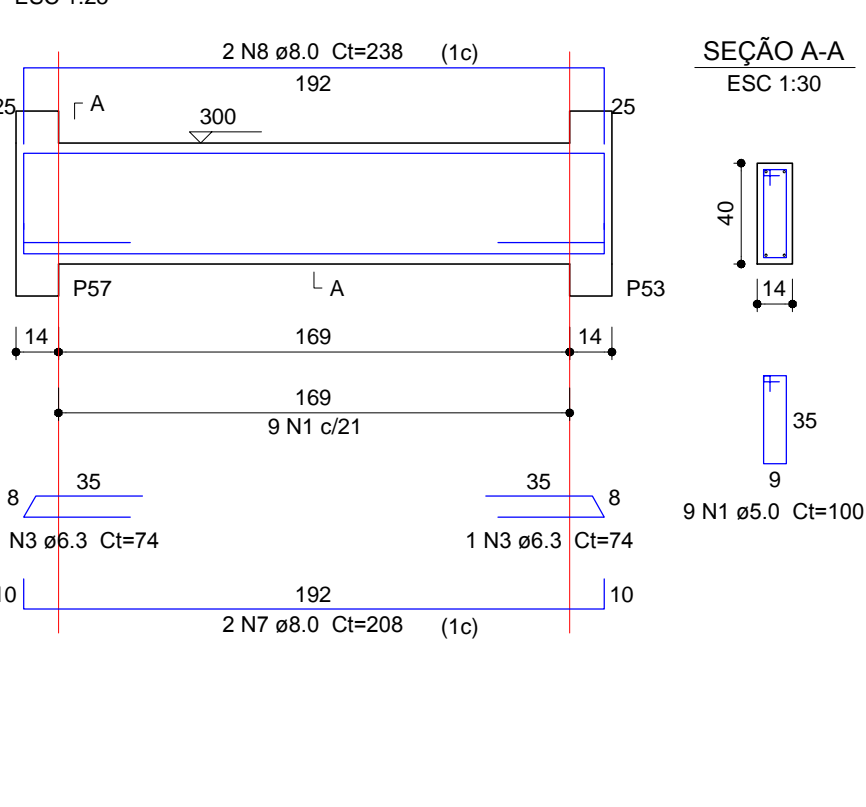
V26 (20 x 80)



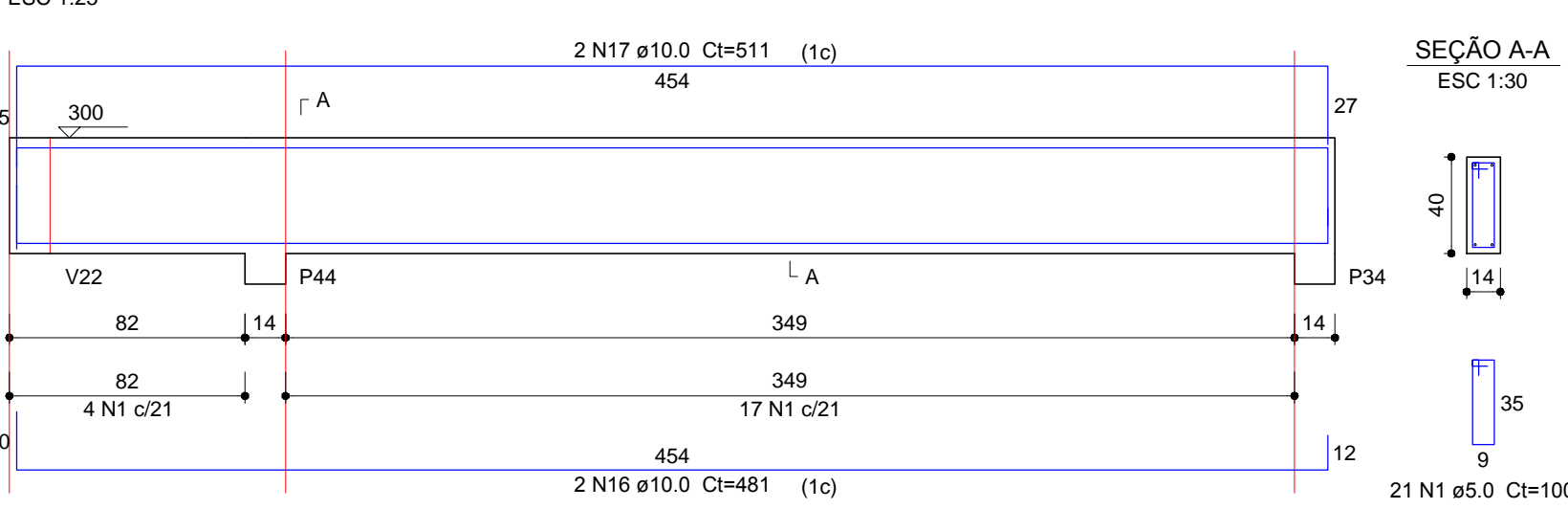
V31 (14 x 40)



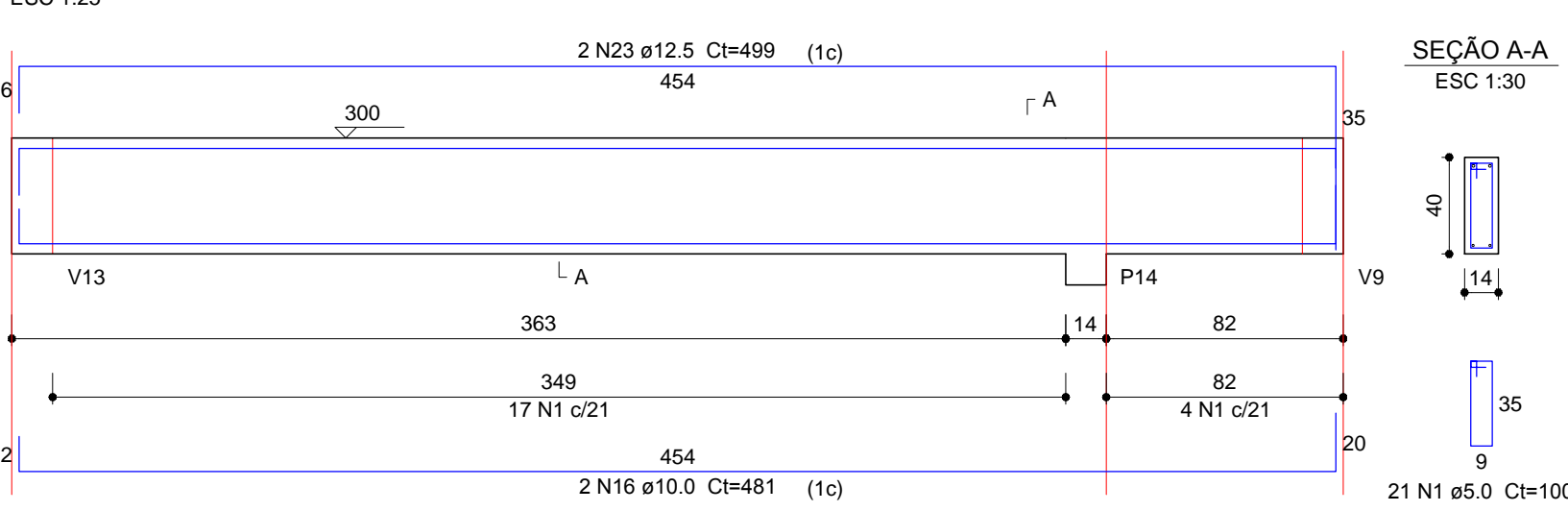
V38 (14 x 40)



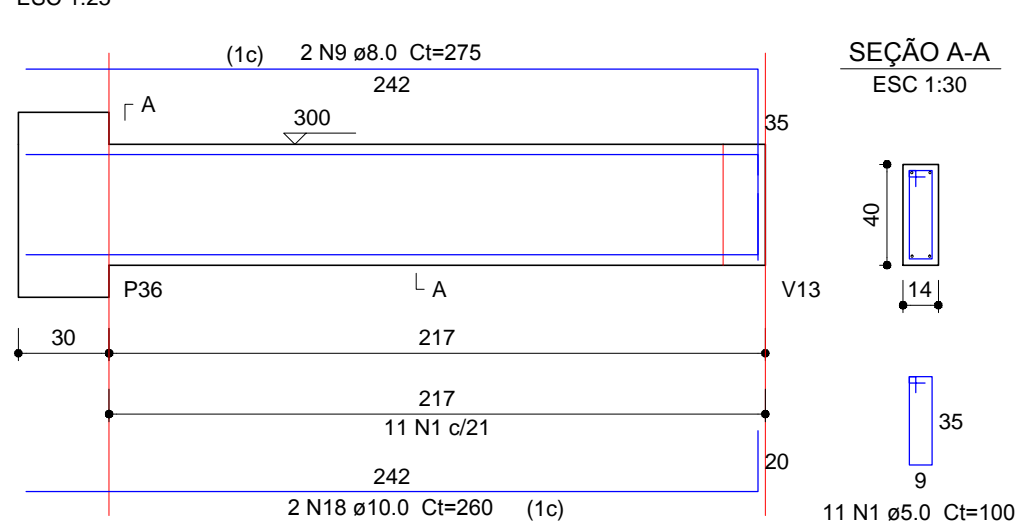
V32 (14 x 40)



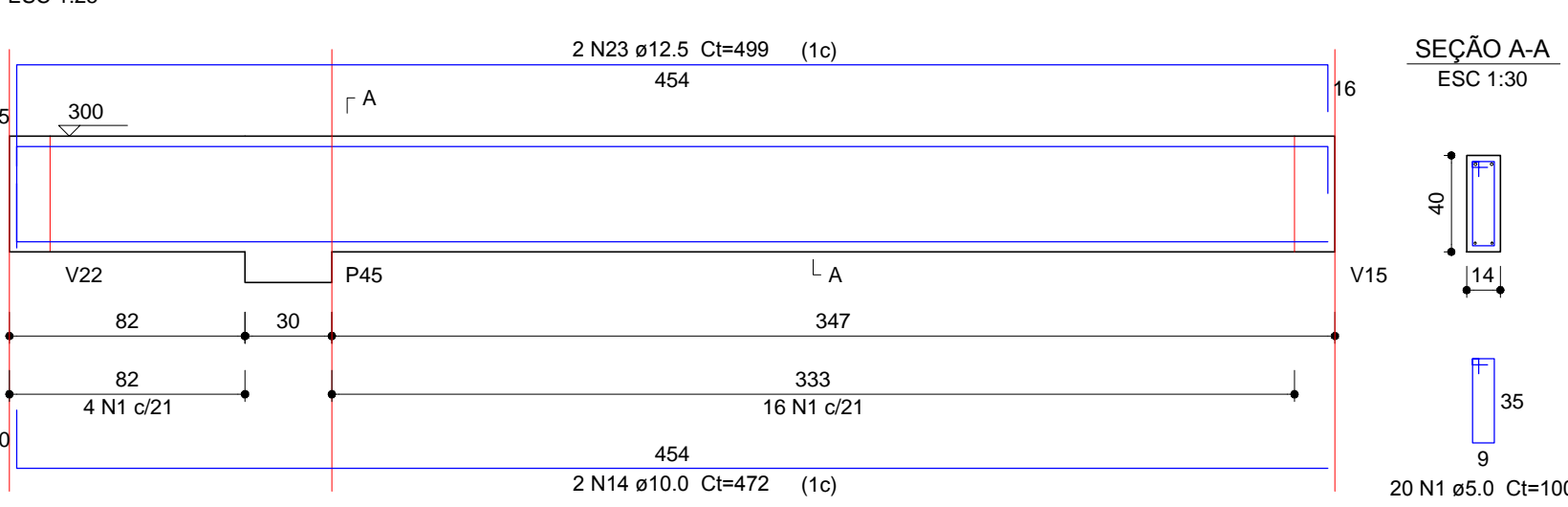
V34 (14 x 40)



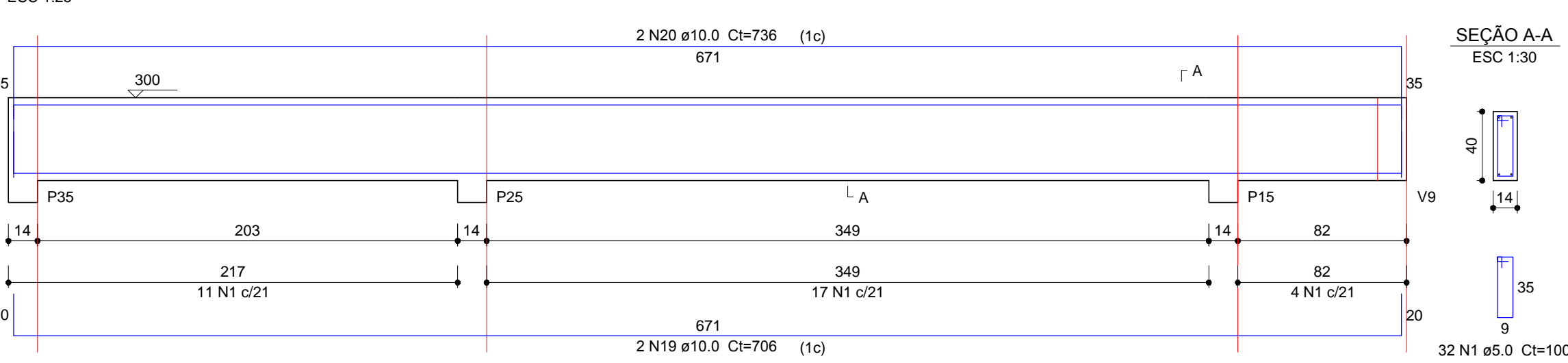
V44 (14 x 40)



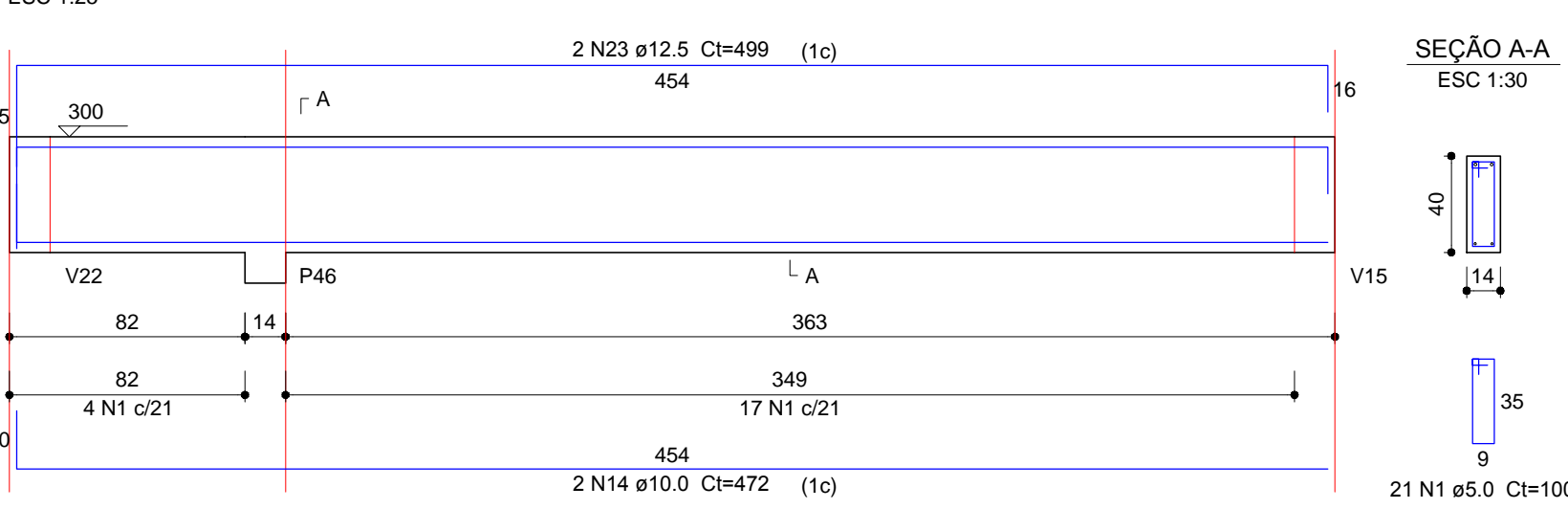
V35 (14 x 40)



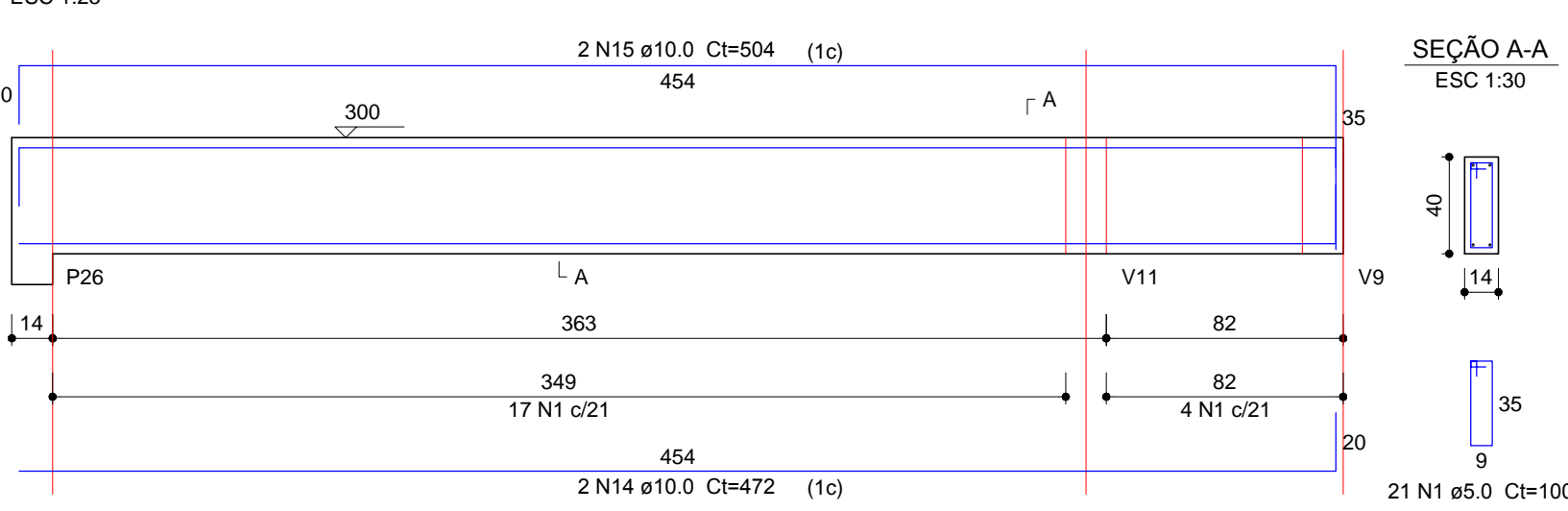
V36 (14 x 40)



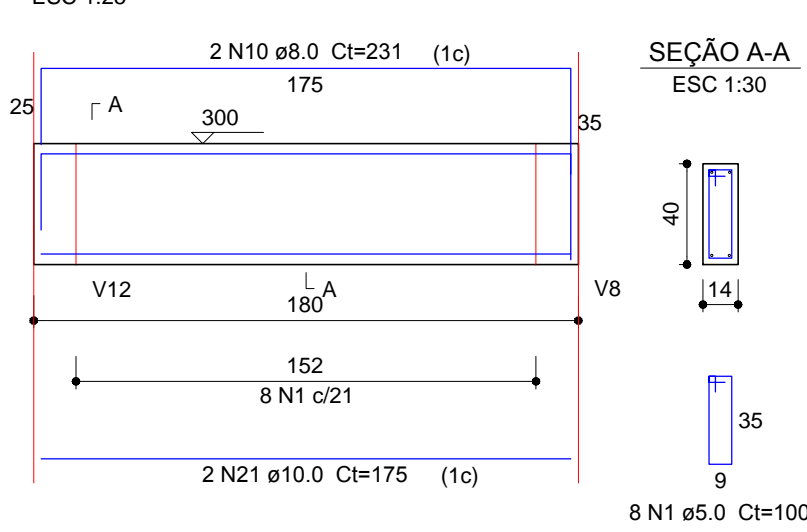
V37 (14 x 40)



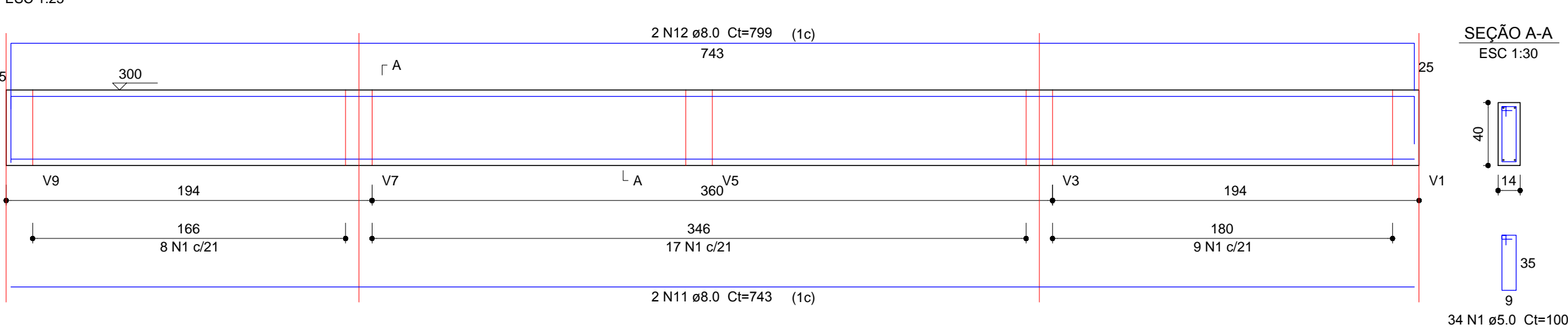
V39 (14 x 40)



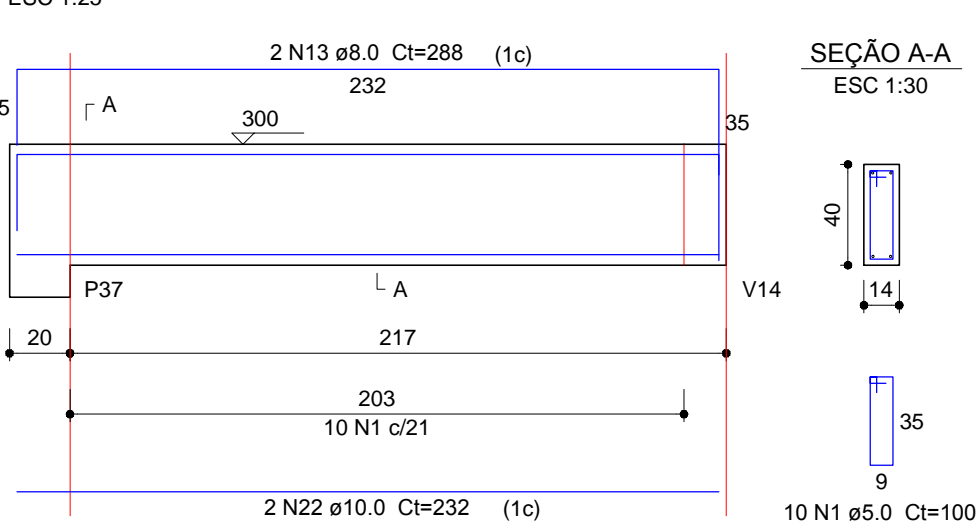
V47 (14 x 40)



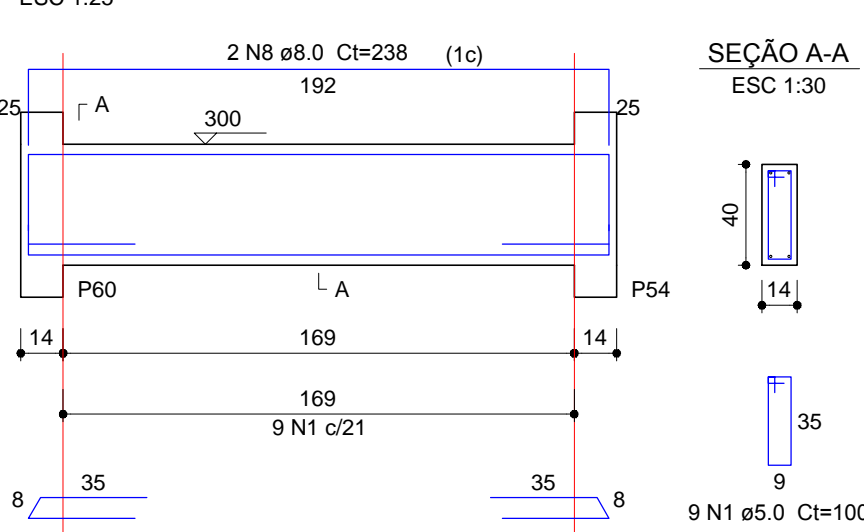
V40 (14 x 40)



V49 (14 x 40)



V55 (14 x 40)



Relação do aço

AÇO	N	DIAM (mm)	QUANT	C.UNIT (cm)	C.TOTAL (cm)
V23					
V31					
V35					
V38					
V44					
V55					
CA60	1	5.0	305	100	30500
CA50	2	6.3	24	192	4608
	3	6.3	4	74	296
	4	8.0	2	1003	2006
	5	8.0	2	1059	2118
	6	8.0	8	769	6152
	7	8.0	4	208	832
	8	8.0	4	238	952
	9	8.0	2	275	550
	10	8.0	2	231	462
	11	8.0	2	743	1486
	12	8.0	2	799	1598
	13	8.0	2	288	576
	14	10.0	10	472	4720
	15	10.0	6	504	3024
	16	10.0	4	481	1924
	17	10.0	2	511	1022
	18	10.0	2	260	520
	19	10.0	2	706	1412
	20	10.0	2	736	1472
	21	10.0	2	175	350
	22	10.0	2	232	464
	23	12.5	6	499	2994
	24	16.0	2	785	1570
	25	20.0	2	756	1512

Resumo do aço

AÇO	DIAM (mm)	C.TOTAL (m)	PESO + 10 % (kg)
CA50	6.3	49.1	13.2
	8.0	167.4	72.6
	10.0	149.1	101.1
	12.5	30	31.7
	16.0	15.7	27.3
	20.0	15.2	41
CA60	5.0	305	51.7
PESO TOTAL (kg)			
CA50	286.9		
CA60	51.7		

Volume de concreto (C-25) = 4.97 m³
Área de forma = 76.67 m²



PRÓ-REITORIA DE ADMINISTRAÇÃO
COORDENAÇÃO DE ENGENHARIA E ARQUITETURA
Rua Esmeralda, 430 - Faixa Nova - Cambi - CEP 97110-747 - Santa Maria - Rio Grande do Sul.
Telefone: (51) 3226-6630

OBRA: CENTRO DE SAÚDE

LOCAL: IF FARROUPILHA - CAMPUS SANTO ÂNGELO

PROJETO: ESTRUTURAL

ÁREA: 385,57m²

CONTEÚDO: ARM. VIGAS COBERTUTA

ESCALA: Indicada

PROPRIETÁRIO:

DATA: Julho/2018

INSTITUTO FEDERAL FARROUPILHA

DESENHO: Igor

RESPONSÁVEL:

PRANCHA: EST 16/23

ENG. CIVIL LETÍCIA ZORZELA - CREA RS 159530