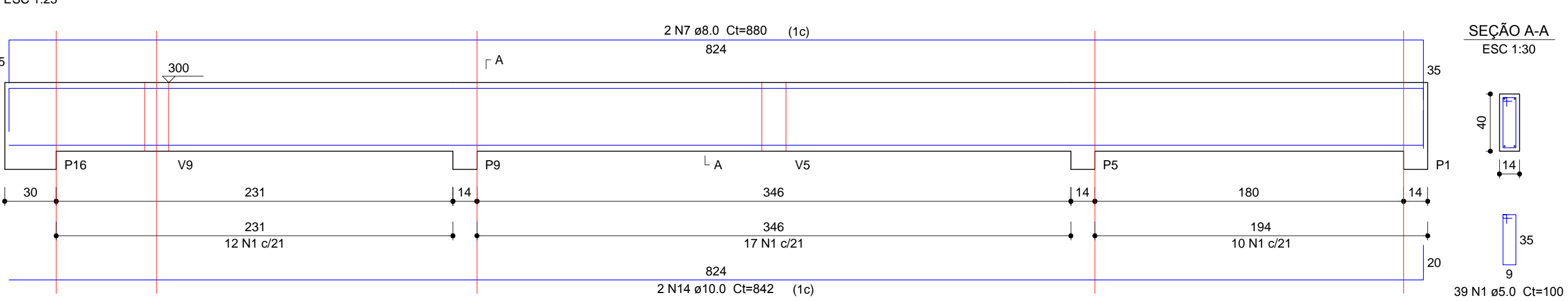
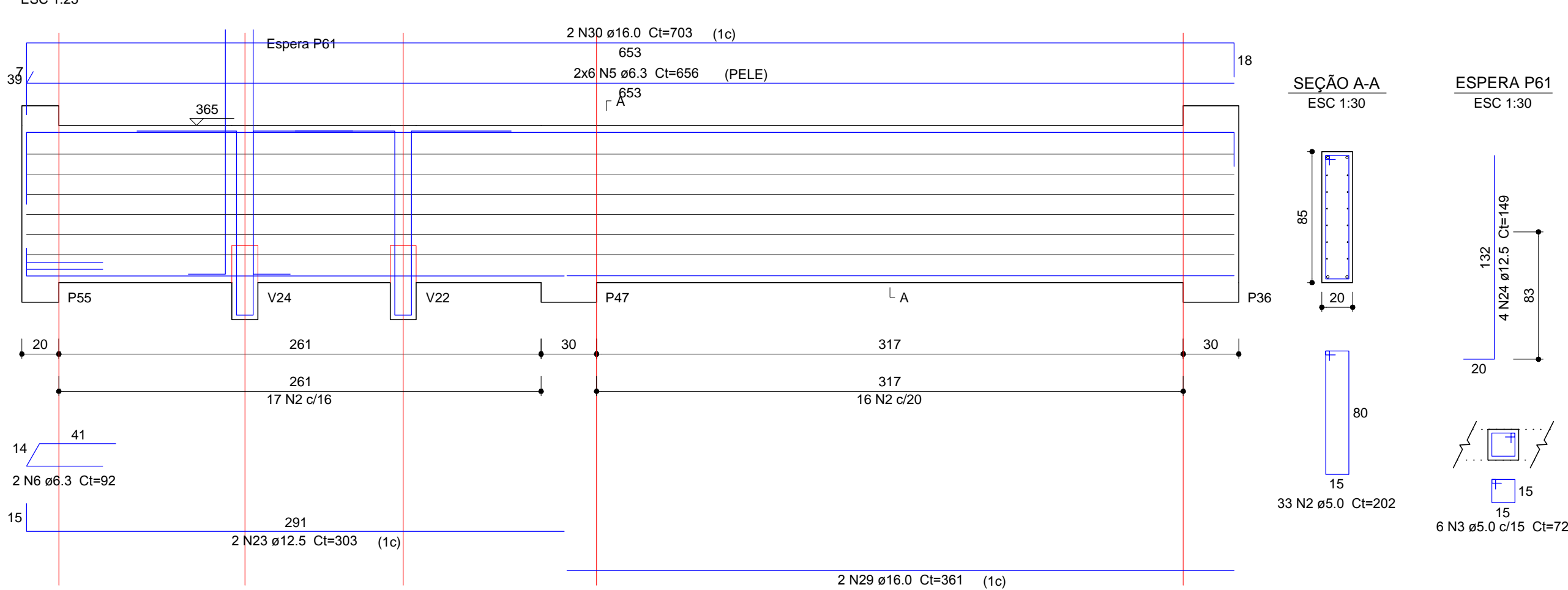


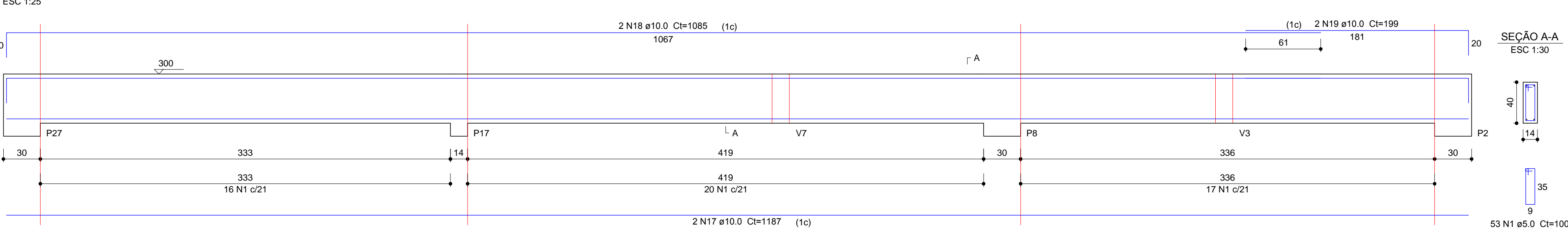
V41 (14 x 40)



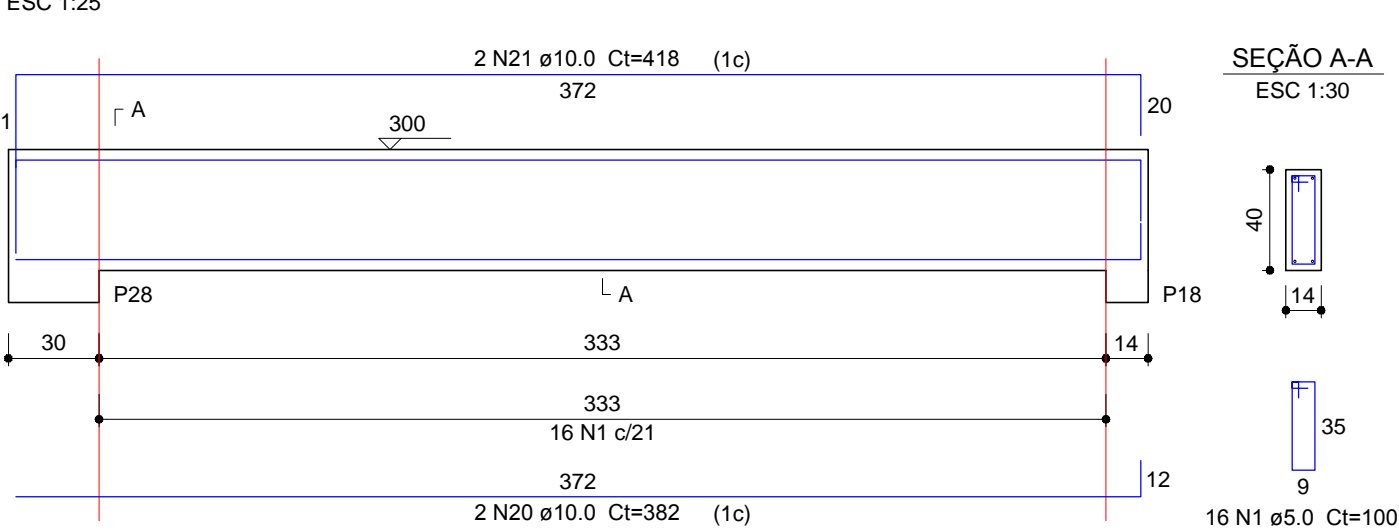
V43 (20 x 85)



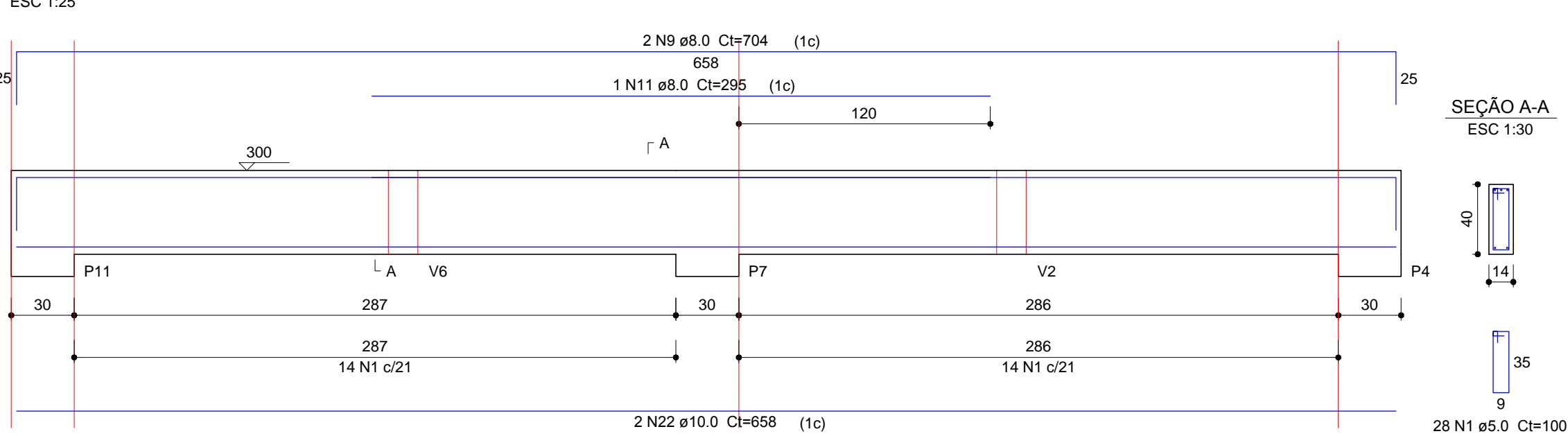
V45 (14 x 40)



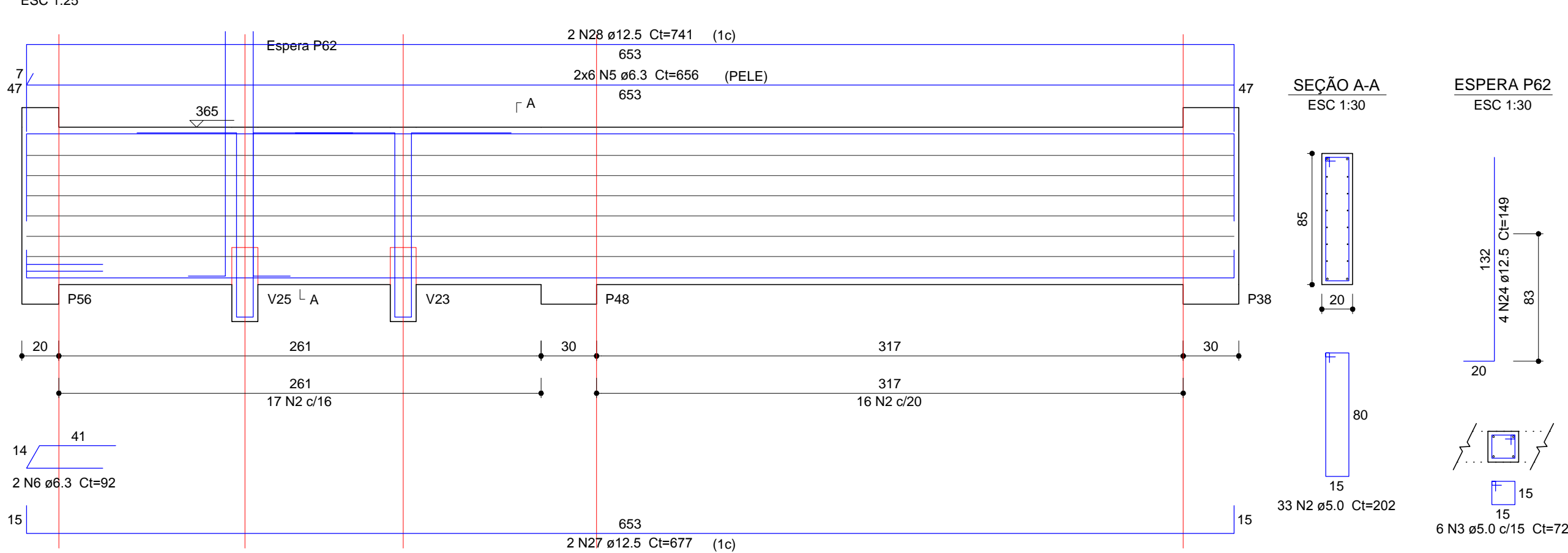
V50 (14 x 40)



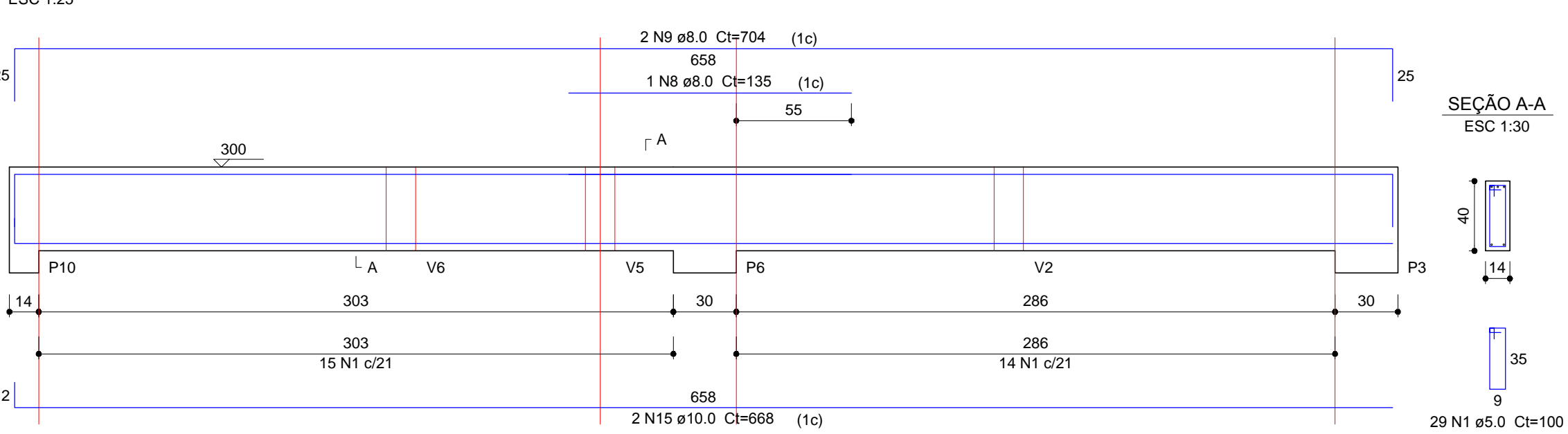
V51 (14 x 40)



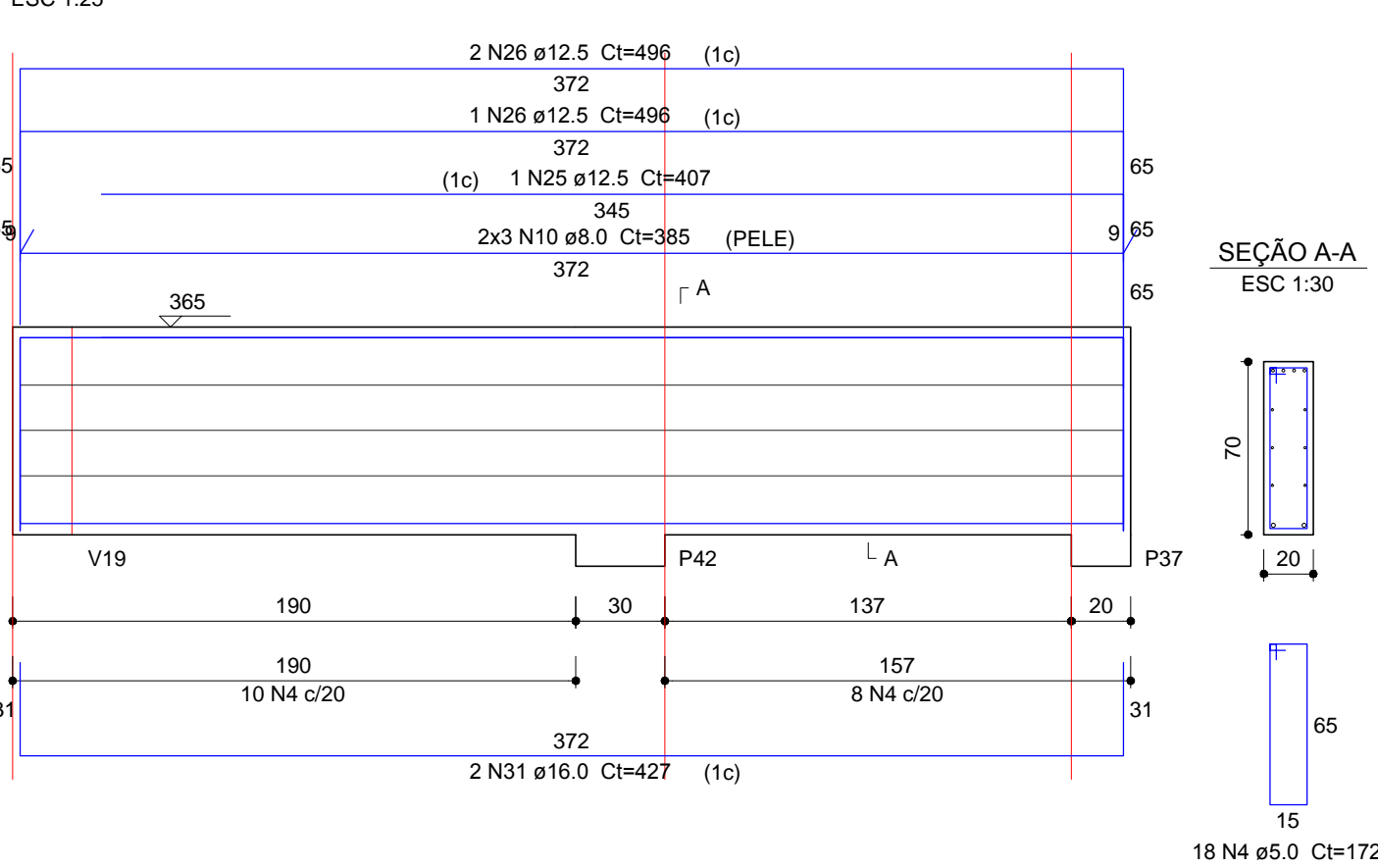
V53 (20 x 85)



V46 (14 x 40)



V48 (20 x 70)



Relação do aço

AÇO	N	DIAM (mm)	QUANT	C.UNIT (cm)	C.TOTAL (cm)
V41	1	5.0	175	100	17500
V46	2	5.0	66	202	13332
V51	3	5.0	12	72	864
	4	5.0	18	172	3096
CA50	5	6.3	24	656	15744
	6	6.3	4	92	368
	7	8.0	2	880	1760
	8	8.0	1	135	135
	9	8.0	4	704	2816
	10	8.0	6	385	2310
	11	8.0	1	295	295
	12	8.0	2	226	452
	13	8.0	2	272	544
	14	10.0	2	842	1684
	15	10.0	2	668	1336
	16	10.0	16	308	4928
	17	10.0	2	1187	2374
	18	10.0	2	1085	2170
	19	10.0	2	199	398
	20	10.0	2	382	764
	21	10.0	2	416	836
	22	10.0	2	658	1316
	23	12.5	2	303	606
	24	12.5	8	149	1192
	25	12.5	1	407	407
	26	12.5	3	496	1488
	27	12.5	2	677	1354
	28	12.5	2	741	1482
	29	16.0	2	361	722
	30	16.0	2	703	1406
	31	16.0	2	427	854

Resumo do aço

AÇO	DIAM (mm)	C.TOTAL (m)	PESO + 10 % (kg)
CA50	6.3	161.2	43.4
	8.0	83.2	36.1
	10.0	158.1	107.2
	12.5	65.3	69.2
	16.0	29.9	51.8
CA60	5.0	348	59
PESO TOTAL (kg)			
CA50	307.6		
CA60	59		

Volume de concreto (C-25) = 4.98 m³
Área de forma = 68.2 m²



PRÓ-REITORIA DE ADMINISTRAÇÃO
COORDENAÇÃO DE ENGENHARIA E ARQUITETURA
Rua Esmeralda, 430 - Faixa Nova - Camobi - CEP 97110-747 - Santa Maria - Rio Grande do Sul.
Telefone: (51) 3226-6630

OBRA: **CENTRO DE SAÚDE**

LOCAL: **IF FARROUPILHA - CAMPUS SANTO ÂNGELO**

PROJETO: **ESTRUTURAL**

ÁREA: **385,57m²**

CONTEÚDO: **ARM. VIGAS COBERTUTA**

ESCALA: **Indicada**

PROPRIETÁRIO:

INSTITUTO FEDERAL FARROUPILHA

DATA: **Julho/2018**

DESENHO: **Iagor**

RESPONSÁVEL:

ENG. CIVIL LETÍCIA ZORZELA - CREA RS 150530

PRANCHA: **EST 17/23**